

BASS COAST SHIRE COUNCIL

KILCUNDA SKATEPARK & PLAYSACE CONCEPT

NOVEMBER 2021 - REVISED CONCEPT FOR COMMUNITY CONSULTATION





BASS COAST SHIRE COUNCIL

KILCUNDA SKATEPARK + PLAYSPLACE

EXISTING CONDITIONS

Date: 04.11.2021
DRAFT: For Community Consultation



PLA'CE
Page Number. 02



BASS COAST SHIRE COUNCIL

KILCUNDA SKATEPARK + PLAYSPLACE

EXISTING CONDITIONS

Date: 04.11.2021
DRAFT: For Community Consultation



PLA'CE
Page Number. 03

CONSULTATION SUMMARY

CONSULTATION 1: WORKING GROUP COMMITTEE - IDEAS WORKSHOP

17/03/2021

SITE

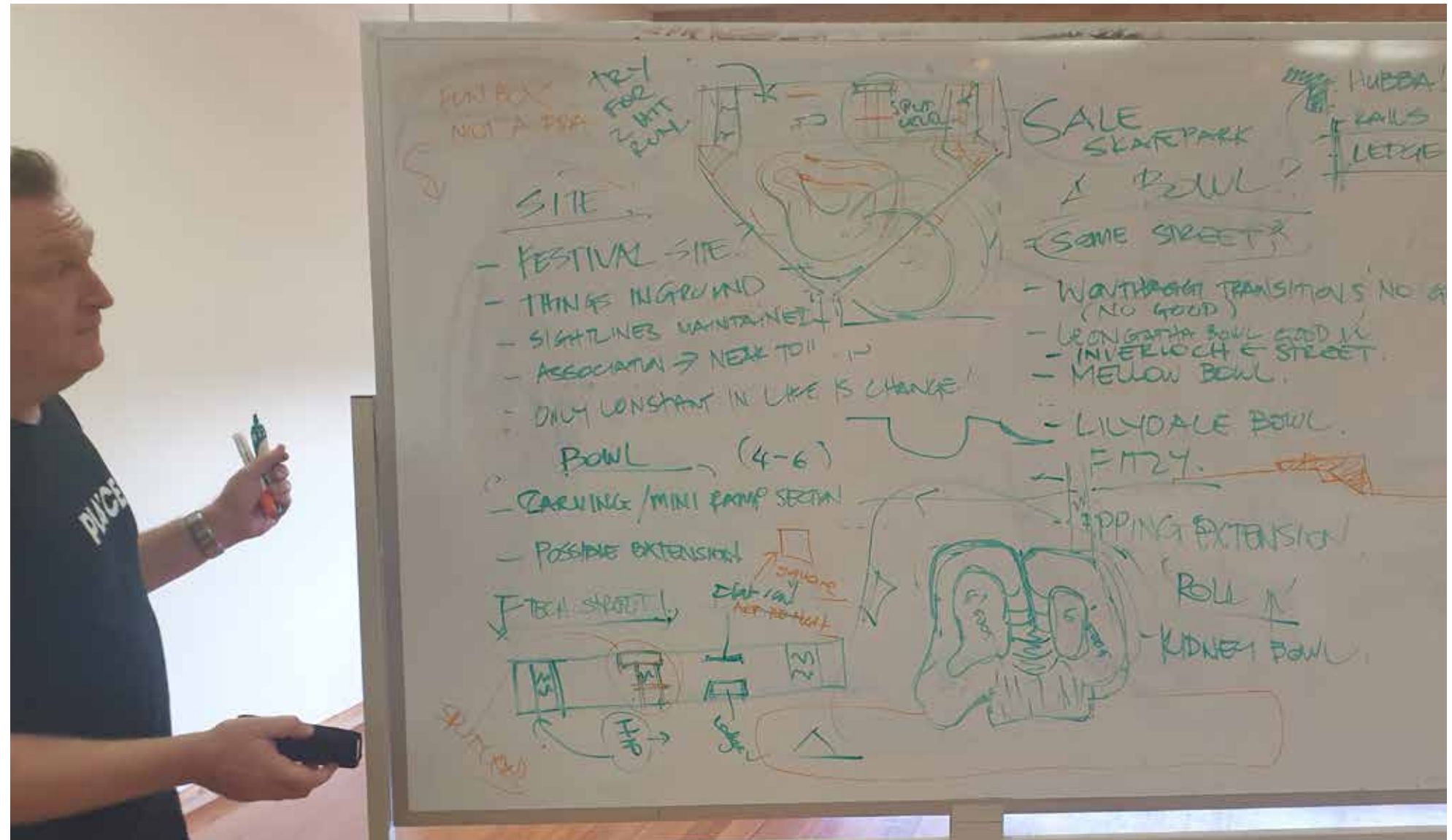
- RETAIN SITE LINES / OCEAN VIEWS
- RETAIN OPEN SPACE FOR EVENTS

SKATE - BOWL (PREFERENCE)

- FLOW BOWL
- MINI RAMP SECTION
- MELLOW BOWL
- 4-6FT

SKATE - STREET ELEMENTS

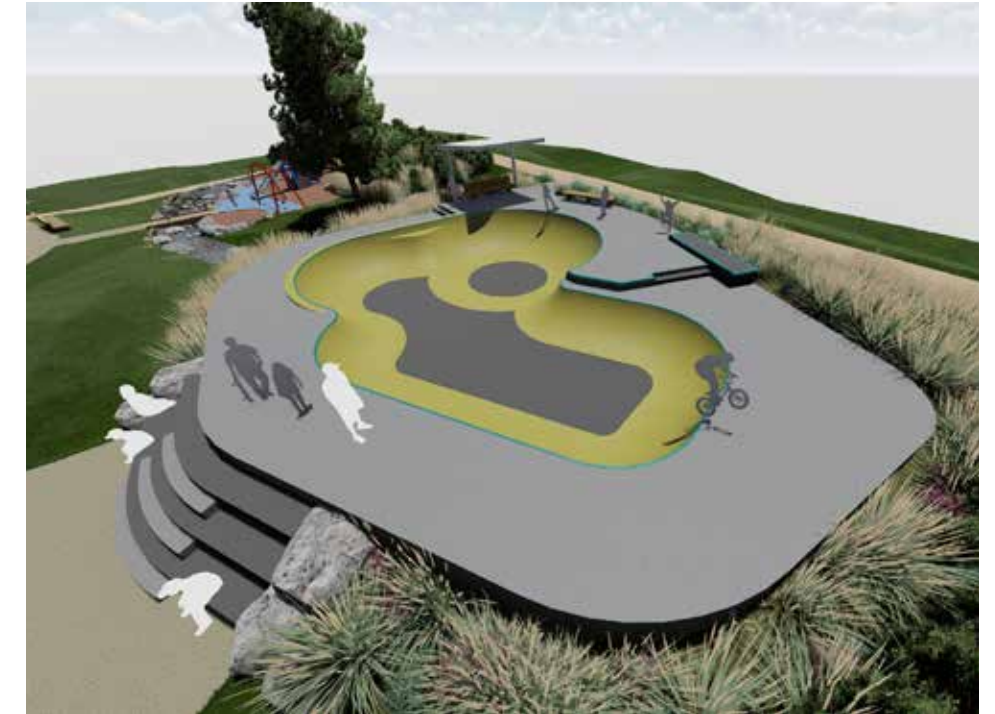
- LEDGE
- SQUARE RAIL
- SPLIT LEVEL
- HIP/BANK CONNECTION TO BOWL



CONSULTATION 2: CONCEPT DESIGN PRESENTATION

07/06/2021

- ADD A ROLL-IN TO THE SKATE
- INCLUDED A RAIL OR “SLAPPY KERB”



BASS COAST SHIRE COUNCIL

KILCUNDA SKATEPARK + PLAYSPLACE

CONSULTATION SUMMARY

Date: 04.11.2021
DRAFT: For Community Consultation



PLA'CE
Page Number. 06

CONSULTATION 3: PUBLIC CONSULTATION

21/08/2021

SKATE

- BEGINNER FRIENDLY
- RAMP TO SKATEPARK AND WITHIN THE SKATE PARK
- THE HIP AT #10 LOOKED TOO TIGHT
- THE LOVE SEAT MIGHT BE A BIT MUCH FOR A SMALL BOWL, BUT DID SEE HOW IT WOULD HELP WITH LINES IN AND OUT OF THE ROUND END.
- WE THOUGHT MAYBE CHANGING THE ANGLE OF THE HALF PIPE END AND MAKING THE LOVE SEAT AN ACTUAL HIP

- BASKETBALL RING INCLUDED

PLAYSPACE

- BIGGER PLAYSPACE WITH MORE ACTIVITIES
- SHELTER FROM WIND RAIN AND SUN
- ENVIRONMENTAL AESTHETICS OF THE PLASTIC- REMOVED SOME PLASTIC ELEMENTS WHERE POSSIBLE INCLUDED MORE TIMER AND ROCKS.
- REMOVE THE BLUE PANELS
- SWAP SWING TO A BASKET SWING



BASS COAST SHIRE COUNCIL

KILCUNDA SKATEPARK + PLAYSPACE

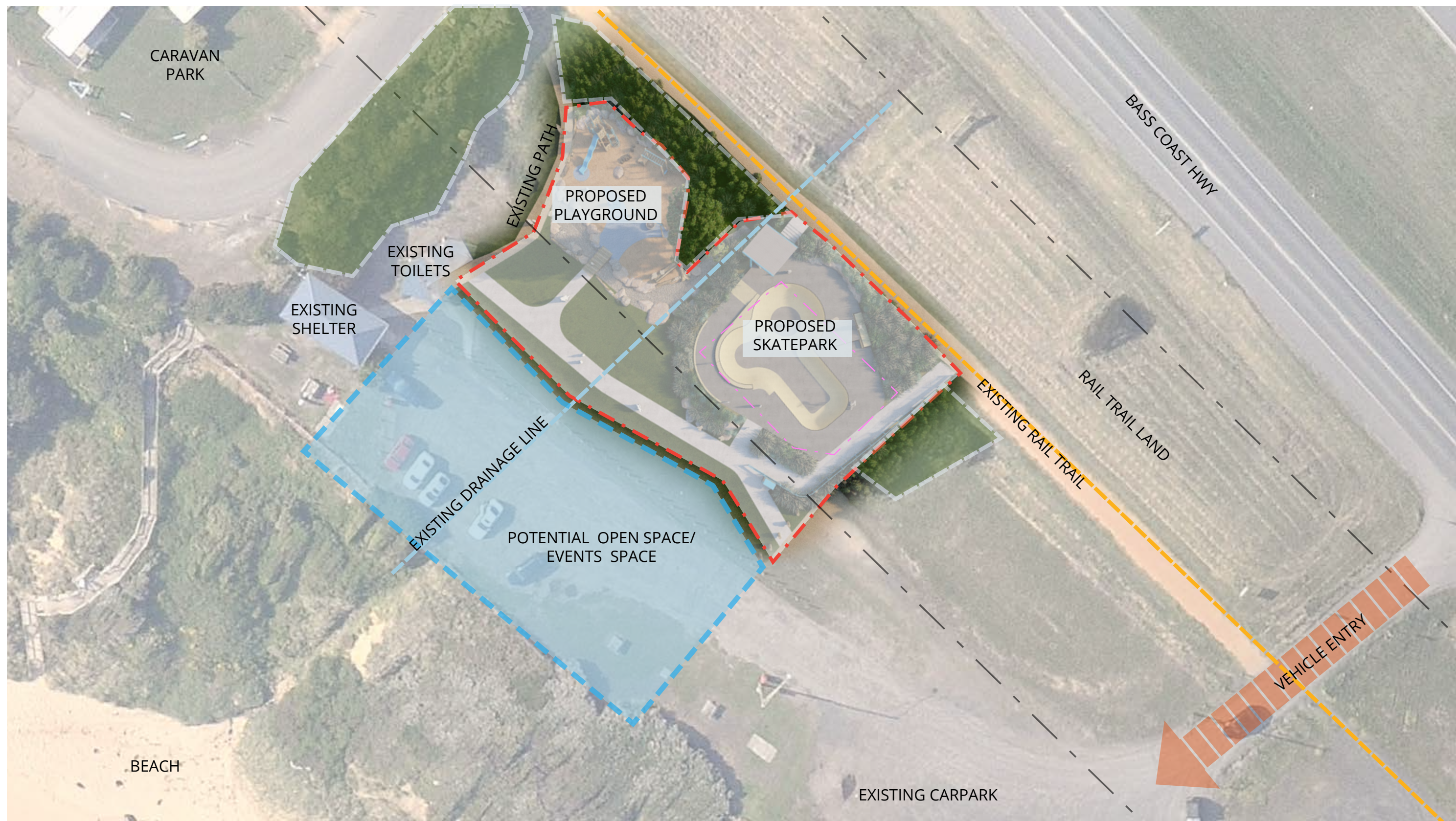
CONSULTATION SUMMARY

Date: 04.11.2021
DRAFT: For Community Consultation



PLA'CE
Page Number. 07

PROJECT OVERVIEW



0m 4m 6m 8m 20m
1:400 @A3

BASS COAST SHIRE COUNCIL

KILCUNDA SKATEPARK + PLAYSACE

SITE CONTEXT

Date: 04.11.2021
DRAFT: For Community Consultation



PLA'CE

Page Number. 09



LEGEND

PLAY

01

COMBINATION PLAY UNIT
WITH JUNIOR SLIDE (900H), MONKEY BARS,
VERTICAL HOOP CLIMBER, SCALING WALL,
ROCK WALL, SHOP COUNTER (UNDER
PLATFORM), SLIDE (2200H)

02

**DRY CREEK BED WITH A FEATURE
CARVED ROCK**

03

SWING SET
NEST SWING

04

LOG BALANCE BEAMS
VARYING LENGTH AND HEIGHT (MAX 500H)
LOGS USED AS BALANCE BEAMS

05

LOG BRIDGE

06

DRY CREEK BED
EXISTING SWALE DRAIN. CLEAN UP AND
REPLACED WITH DRY CREEK BED

SKATE

07

ROLL IN
ROLL IN HIP BLENDING INTO QUARTER PIPE

08

1500H EXTENSION

09

1200H MINI RAMP SECTION

10

300H SUB BOX/ EURO GAP

11

1800H DEEP END
WITH 300H WATERFALL

12

200H PIER 7 LEDGE
WITH 200H-500H LEDGE,

13

CONNECTION TO RAIL TRAIL

14

**SHELTER (PROVISIONAL) WITH
SEATING**

15

PROPOSED PATH (PROVISIONAL)

16

RETAINED OPEN SPACE

17

RAMP ACCESS PATH (PROVISIONAL)
WITH STAIRS ACCESS TO SKATE

18

BIKE RACKS

0m2m4m6m10m

1:200 @A3



VIEW FROM SOUTH WEST

BASS COAST SHIRE COUNCIL

KILCUNDA SKATEPARK + PLAYSPACE

ARTIST IMPRESSION - SITE OVERVIEW

Date: 04.11.2021
DRAFT: For Community Consultation





VIEW FROM SOUTH

BASS COAST SHIRE COUNCIL

KILCUNDA SKATEPARK + PLAYSPACE

ARTIST IMPRESSION - SITE OVERVIEW

Date: 04.11.2021
DRAFT: For Community Consultation



Page Number. 12



VIEW FROM BASS COAST HWY

BASS COAST SHIRE COUNCIL

KILCUNDA SKATEPARK + PLAYSACE

ARTIST IMPRESSION - SITE OVERVIEW

Date: 04.11.2021
DRAFT: For Community Consultation



SKATE

Working in conjunction with the local Kilcunda community association the skate park has been placed in the location of the existing playspace. It has been designed to sit low in the site to minimal site line obstruction, retaining the expansive views over the ocean. The skate has been design following user feedback for a mellow flow bowl (4-6ft) with features such as a roll-in and mellow transition, mini ramp to provide entry level transition access, while the extensions, hips and step ups provide features for more advanced users. To compliment the transition a small pier 7 block and 2 stairs provide basic “sessionable” street style skating elements.



BASS COAST SHIRE COUNCIL

KILCUNDA SKATEPARK + PLAYSPACE

ARTIST IMPRESSION - SKATEPARK OVERVIEW

Date: 04.11.2021
DRAFT: For Community Consultation



Page Number. 15



BASS COAST SHIRE COUNCIL

KILCUNDA SKATEPARK + PLAYSPACE

ARTIST IMPRESSION - SKATEPARK OVERVIEW

Date: 04.11.2021
DRAFT: For Community Consultation





BASS COAST SHIRE COUNCIL

KILCUNDA SKATEPARK + PLAYSPACE

ARTIST IMPRESSION - SKATEPARK OVERVIEW

Date: 04.11.2021
DRAFT: For Community Consultation



Page Number. 17



BASS COAST SHIRE COUNCIL

KILCUNDA SKATEPARK + PLAYSACE

ARTIST IMPRESSION - SKATEPARK OVERVIEW

Date: 04.11.2021
DRAFT: For Community Consultation



Page Number. 18

PLAY

As the existing play space reaches it's end of life, the renew project as to provide the local community the with a new play space that is a modern version of the existing. Retaining the fundamental play elements, such as a swing, slides and monkey bars, the new design features more organic materials, such as carved rocks in the dry creek and balance logs to provide more natural play elements to reflect the materiality of the region. The addition of the a accessible spinner provides element for users with restricted mobility. v



BASS COAST SHIRE COUNCIL

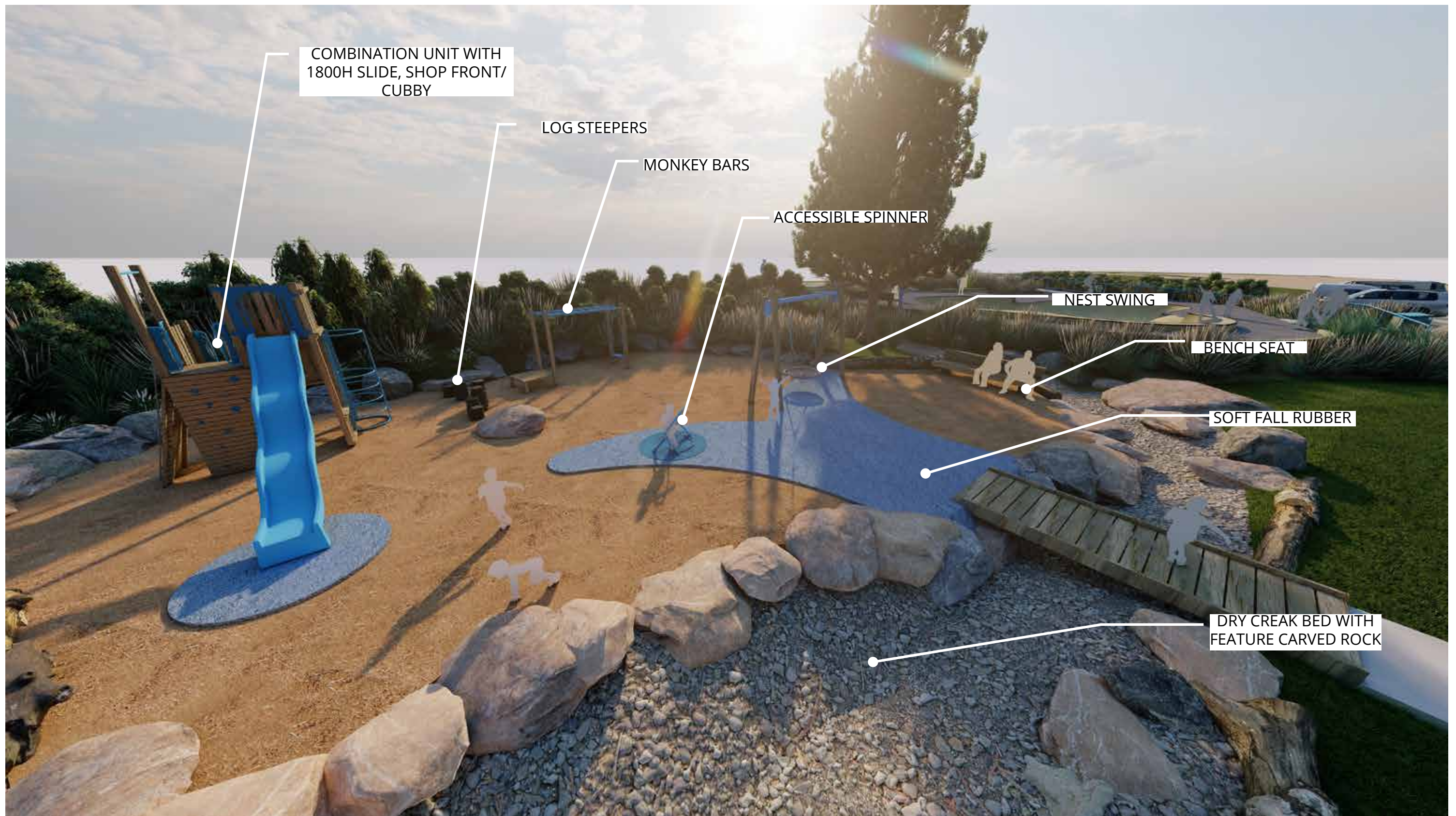
KILCUNDA SKATEPARK + PLAYSACE

ARTIST IMPRESSION - PLAY

Date: 04.11.2021
DRAFT: For Community Consultation



PLA'CE
Page Number. 20



BASS COAST SHIRE COUNCIL

KILCUNDA SKATEPARK + PLAYSPACE

ARTIST IMPRESSION - PLAY

Date: 04.11.2021
DRAFT: For Community Consultation



Page Number. 21



BASS COAST SHIRE COUNCIL

KILCUNDA SKATEPARK + PLAYSPACE

ARTIST IMPRESSION - PLAY

Date: 04.11.2021
DRAFT: For Community Consultation



Page Number. 22



BASS COAST SHIRE COUNCIL

KILCUNDA SKATEPARK + PLAYSPACE

ARTIST IMPRESSION - PLAY

Date: 04.11.2021
DRAFT: For Community Consultation



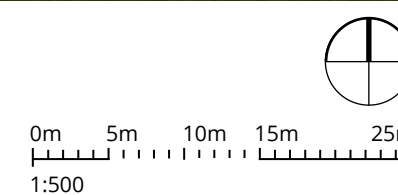
PLA'CE
Page Number. 23



BASS COAST SHIRE COUNCIL

KILCUNDA SKATEPARK + PLAYSACE

ARTIST IMPRESSION - SITE OVERVIEW



Date: 04.11.2021
DRAFT: For Community Consultation



PLA'CE
Page Number. 24