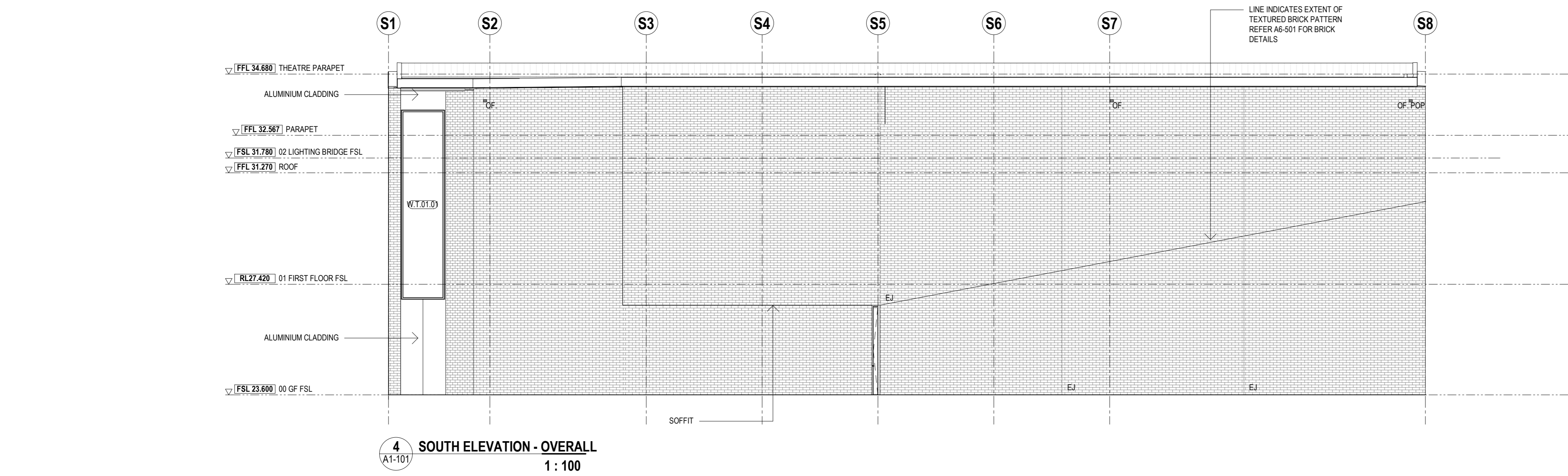
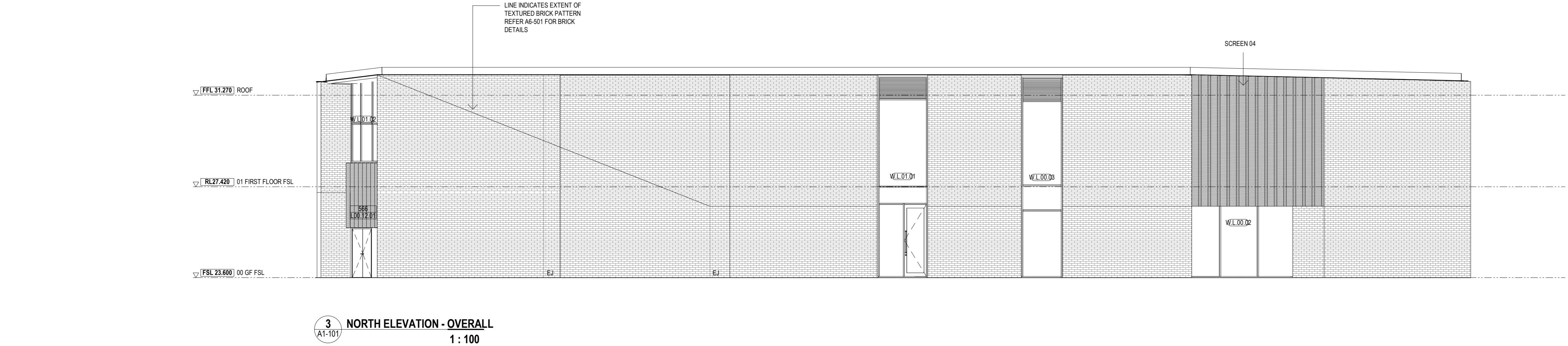
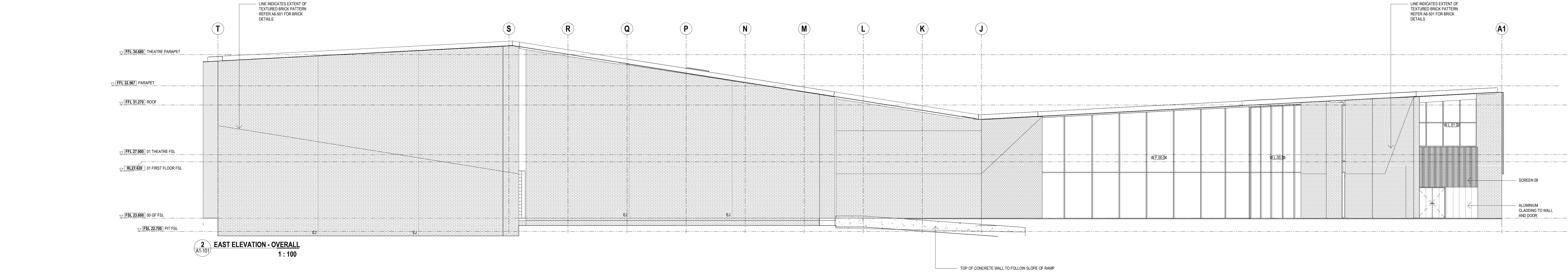


LEGEND
EJ - BRICK EXPANSION JOINT



NOT FOR CONSTRUCTION

GENERAL NOTES
THIS DRAWING SHOULD BE READ IN CONJUNCTION WITH ALL RELEVANT CONTRACTS, SPECIFICATIONS AND DRAWINGS.
COPYRIGHT OF THIS DRAWING IS VESTED IN THE ARCHITECTS.
DIMENSIONS ARE IN MILLIMETRES AND LEVELS ARE IN METRES.
DO NOT SCALE OFF DRAWINGS.
USE FIELD/REVISIONS ONLY. CHECK AND VERIFY ALL DIMENSIONS ON SITE PRIOR TO COMMENCING WORK.

Drawn by: J. B. Jones and Associates
Project: 20-017

REV	DATE	DESCRIPTION
T1	16.07.2021	ISSUED FOR TENDER

CLIENT
BASS COAST SHIRE COUNCIL

PROJECT
COWES COMMUNITY & CULTURAL CENTRE
97 Thompson Avenue, Cowes
VIC 3922

DRAWING TITLE
OVERALL BUILDING ELEVATIONS

DATE	CHECKED	APPROVED
16.07.2021	DP	DVH

SCALE
1:100
0 0.5 1 2 3 4 5m

STATUS
TENDER ISSUE

DRAWING NUMBER
A2-101

REVISION
T1

Jackson Clements Burrows Architects

Jackson Clements Burrows Pty Ltd Architects
345 SWAN STREET RICHMOND Vic 3121
T +613 9854 8227 jcba.com.au

