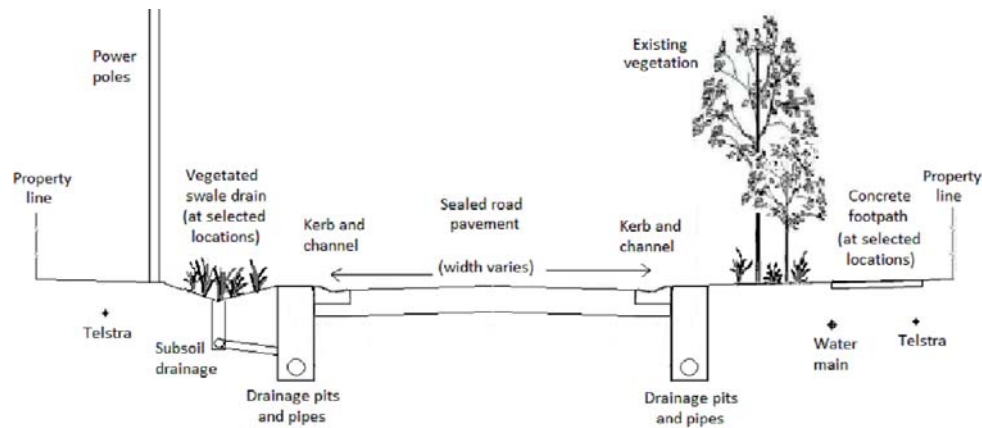


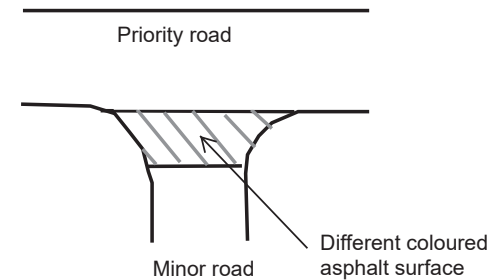
KEY PLAN OF LAYOUT SHEETS



STANDARD CROSS SECTION (WITH FOOTPATH)



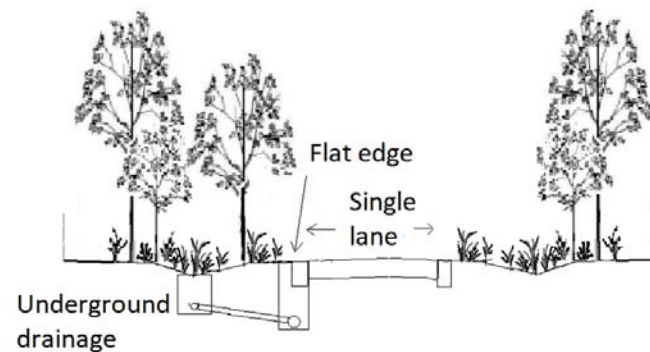
THRESHOLD TREATMENT (TO HIGHLIGHT INTERSECTION PRIORITY AND REMOVE SEE THROUGH EFFECT FOR ROAD SAFETY)



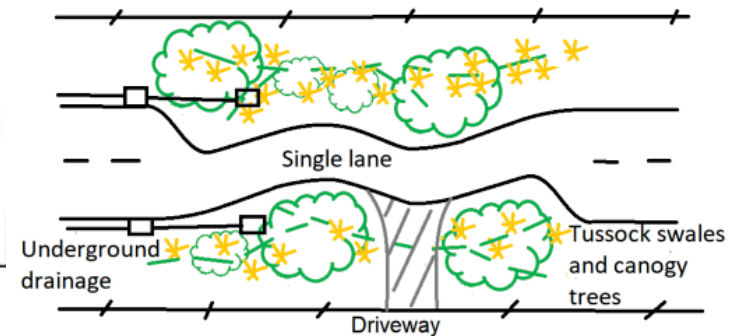
NOTES

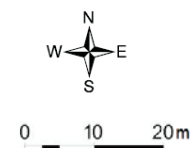
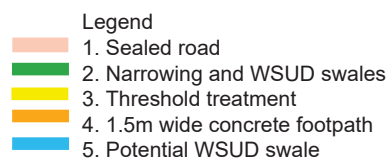
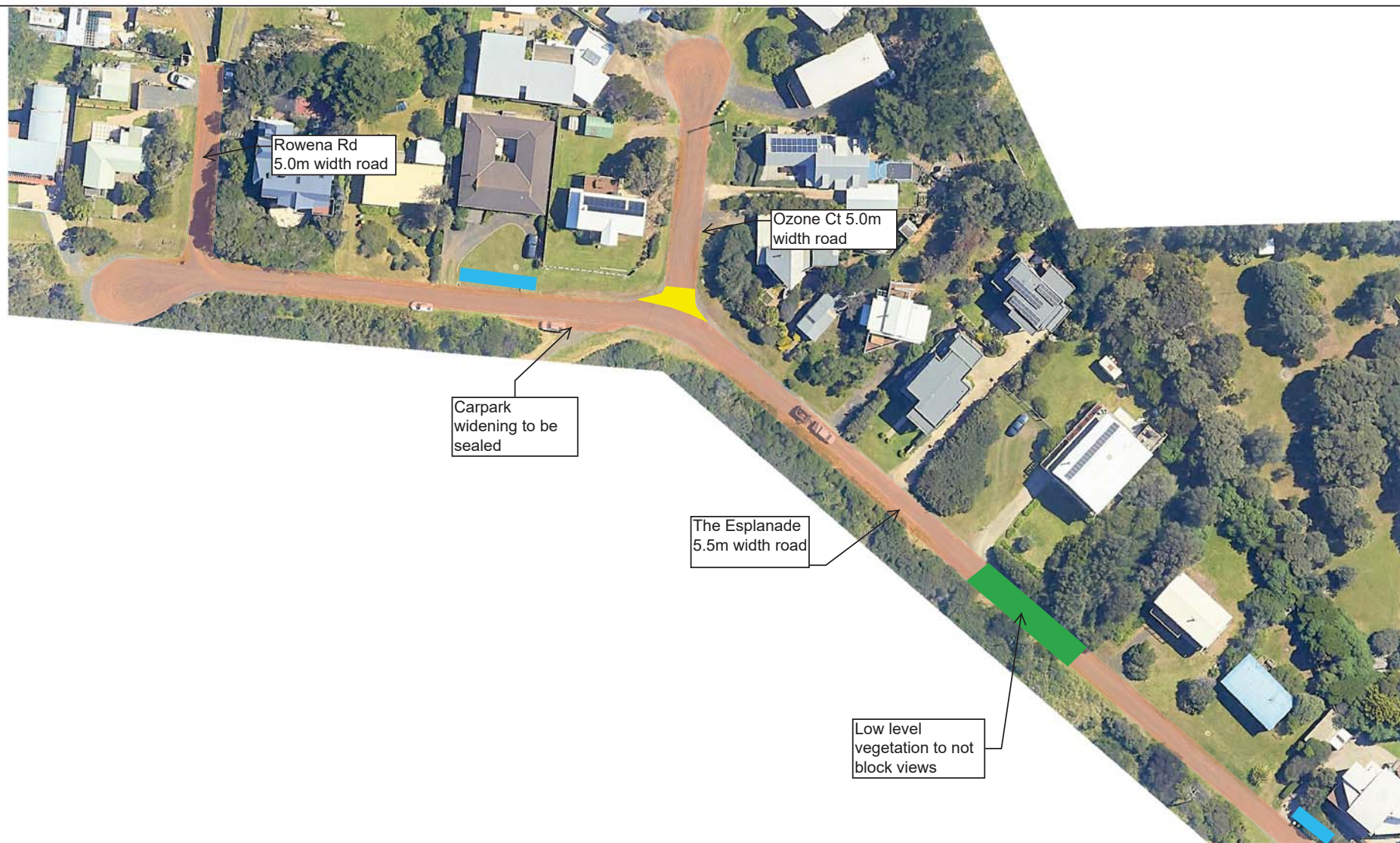
1. Underground drainage pipes not shown on plan. These will be under kerbs and also at back of lots (where required in drainage easements).
2. Road widths marked on plan indicative and subject to change during detailed design due to service locations or minimising vegetation impacts.
General criteria used to select road widths
 $>500v/d = 7.3m$
 $200-500v/d = 6.0m$
 $<200v/d = 5.5m$
 serves < 15 properties or to limit vegetation impacts = 5.0m
3. Road narrowings and WSUD swales indicative location only shown. Locations subject to change during detailed design and depend on underground service locations and driveways. In some locations driveways will need to be incorporated or alternative traffic management arrangements considered. Driveway turning requirements to be discussed with owners.
4. Threshold treatments are different coloured asphalt to highlight intersection priority, remove see through effects and improve road safety.
6. Potential WSUD swales are dependent on existing service depths.

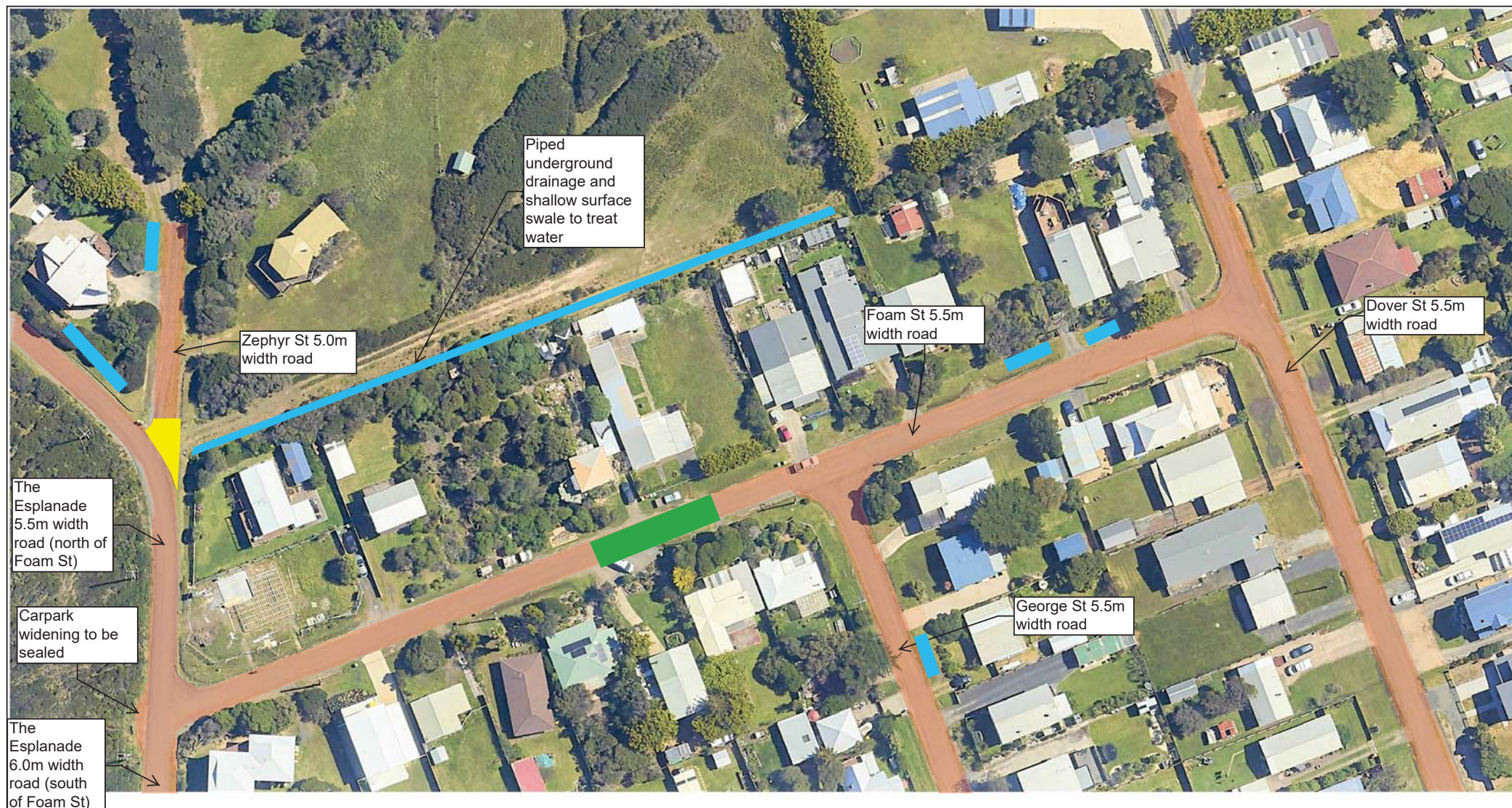
ROAD NARROWINGS: CROSS SECTION



ROAD NARROWINGS: CROSS SECTION

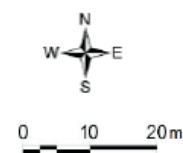






**SURF BEACH AND SUNDERLAND BAY ESTATES
ROAD AND DRAINAGE IMPROVEMENT PROJECT
CONCEPT PLANS
SHEET 4 OF 35
REV 0 - 9/2/2023**

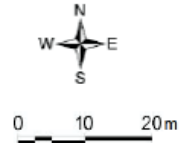
- Legend**
- 1. Sealed road
 - 2. Narrowing and WSUD swales
 - 3. Threshold treatment
 - 4. 1.5m wide concrete footprint
 - 5. Potential WSUD swale

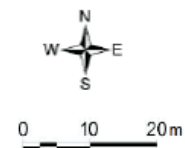
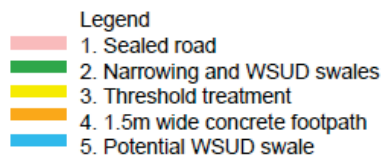
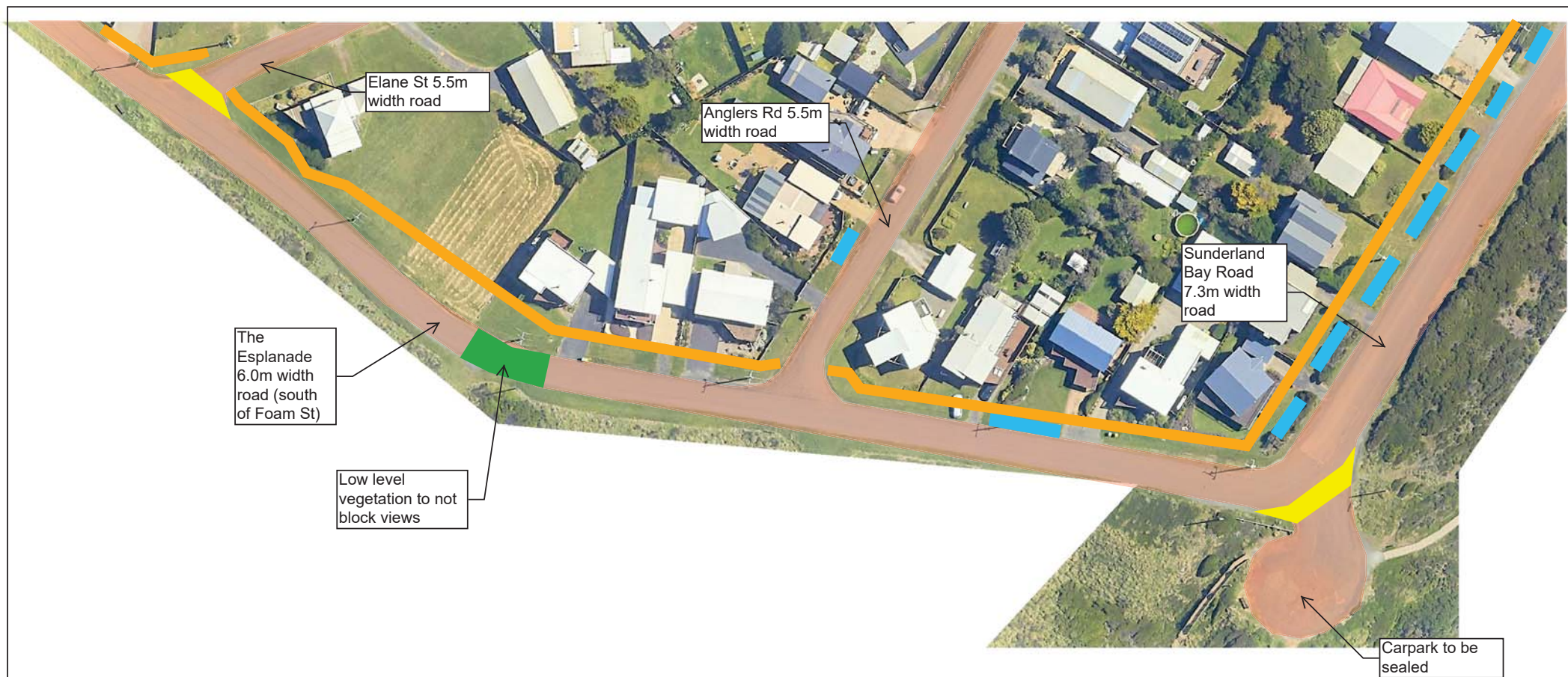


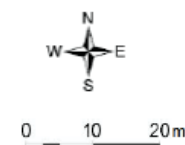
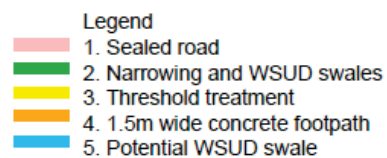


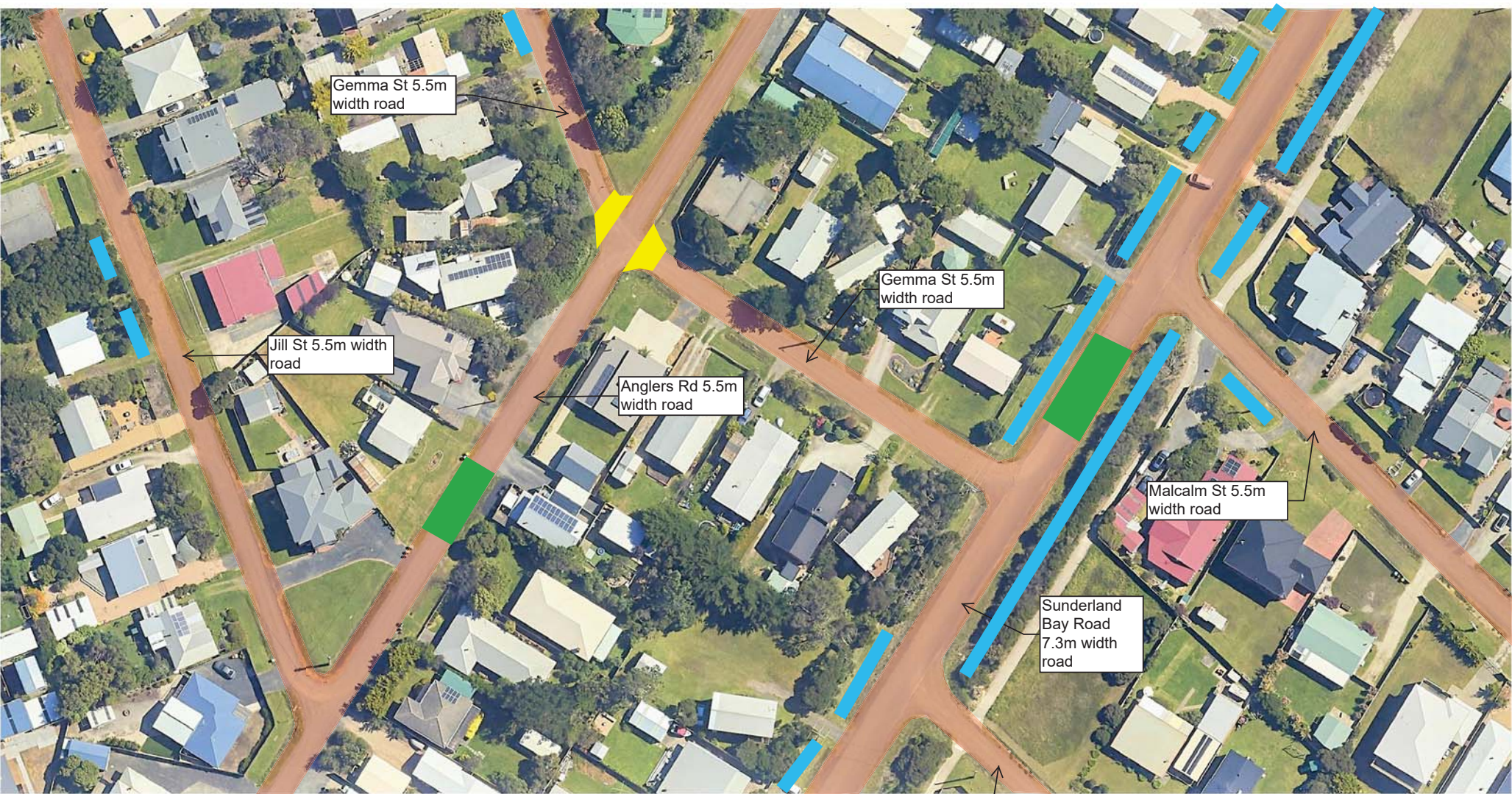
Legend

- 1. Sealed road
- 2. Narrowing and WSUD swales
- 3. Threshold treatment
- 4. 1.5m wide concrete footpath
- 5. Potential WSUD swale



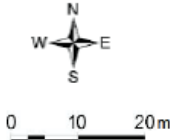


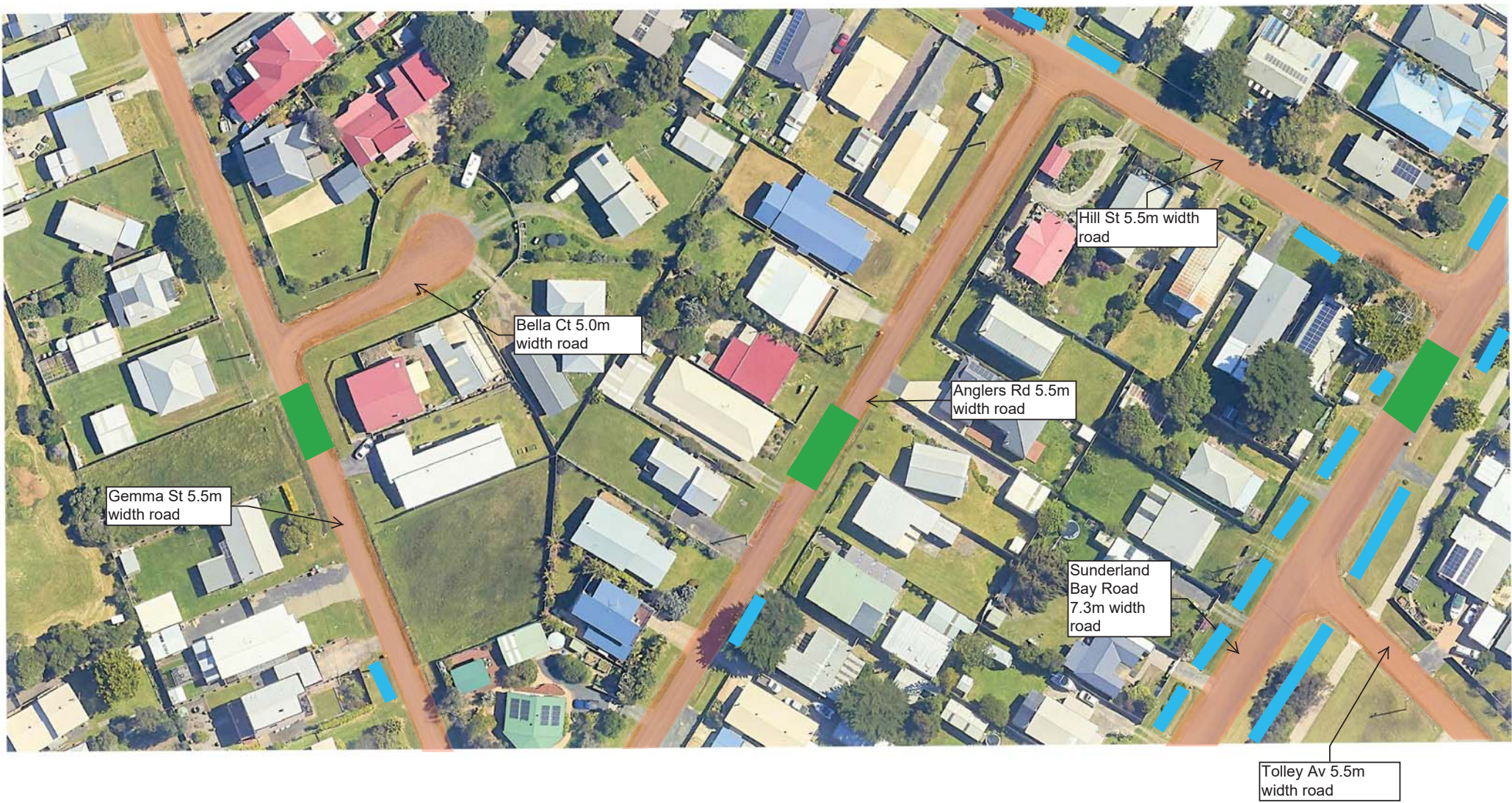




SURF BEACH AND SUNDERLAND BAY ESTATES
ROAD AND DRAINAGE IMPROVEMENT PROJECT
CONCEPT PLANS
SHEET 8 OF 35
REV 0 - 9/2/2023

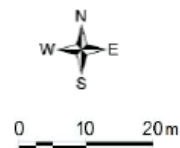
- Legend
- 1. Sealed road
 - 2. Narrowing and WSUD swales
 - 3. Threshold treatment
 - 4. 1.5m wide concrete footpath
 - 5. Potential WSUD swale

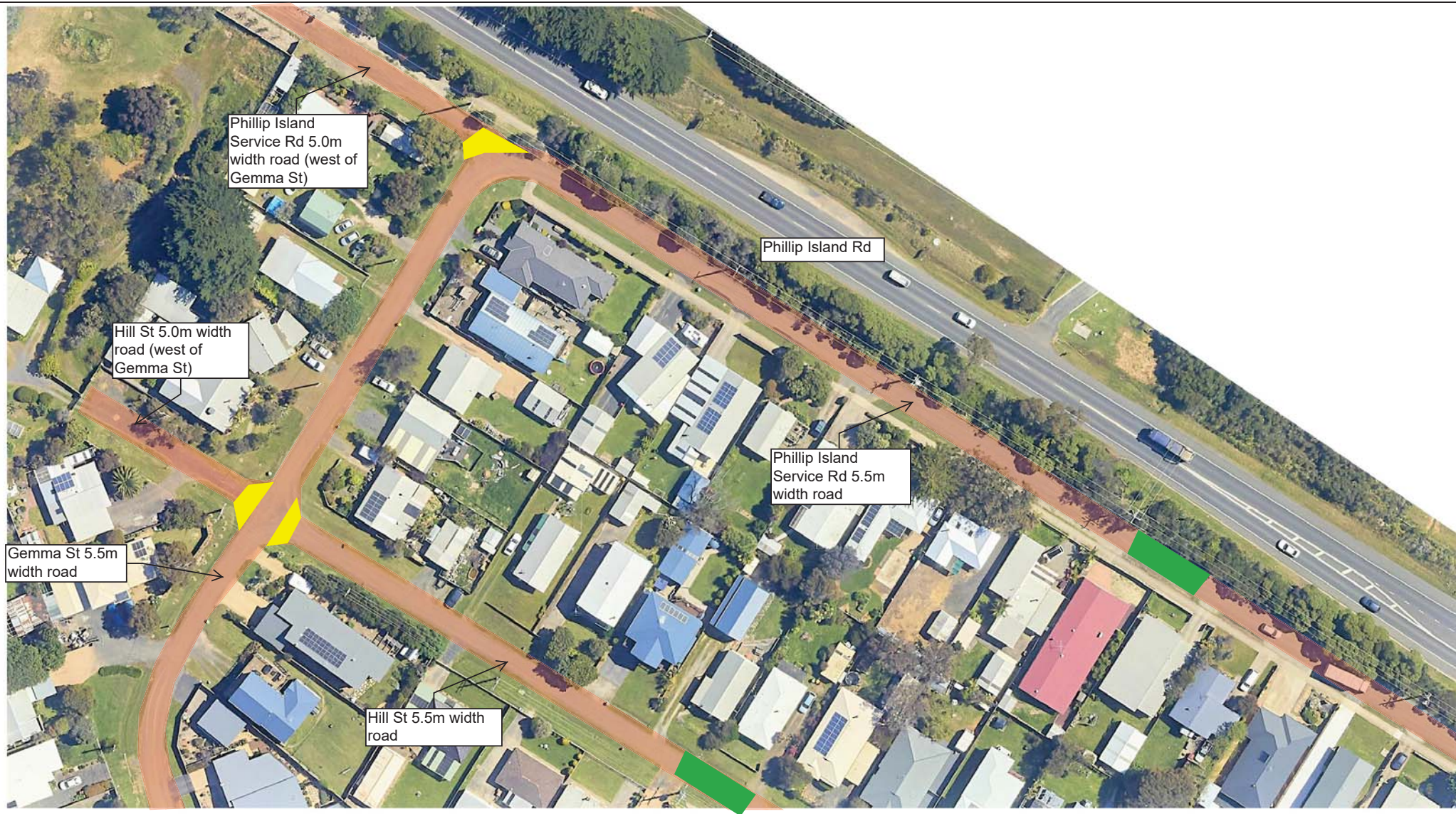




SURF BEACH AND SUNDERLAND BAY ESTATES
ROAD AND DRAINAGE IMPROVEMENT PROJECT
CONCEPT PLANS
SHEET 9 OF 35
REV 0 - 9/2/2023

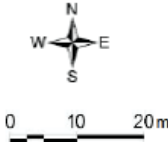
- Legend
- 1. Sealed road
 - 2. Narrowing and WSUD swales
 - 3. Threshold treatment
 - 4. 1.5m wide concrete footpath
 - 5. Potential WSUD swale



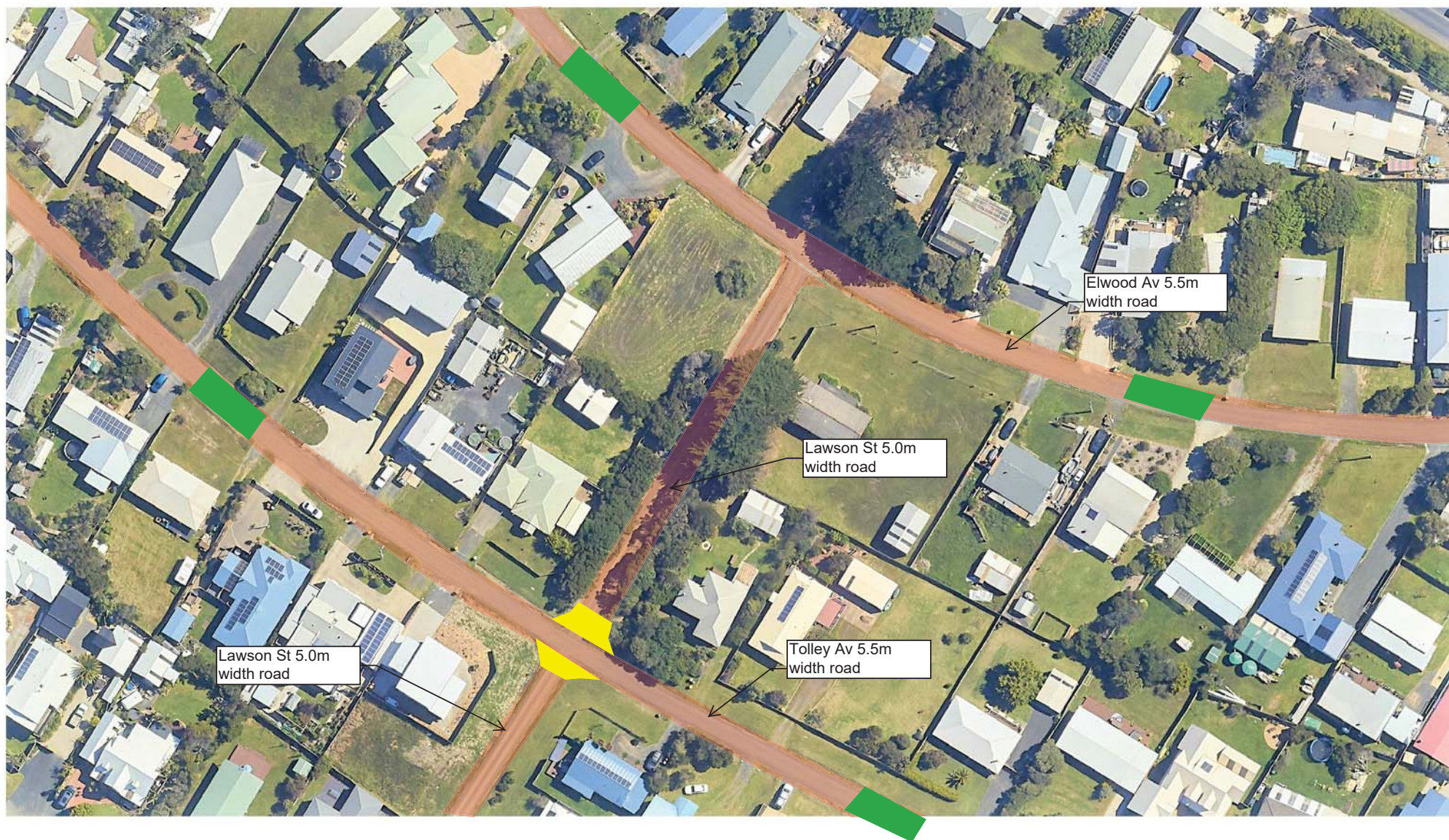


SURF BEACH AND SUNDERLAND BAY ESTATES
 ROAD AND DRAINAGE IMPROVEMENT PROJECT
 CONCEPT PLANS
 SHEET 10 OF 35
 REV 0 - 9/2/2023

- Legend
- 1. Sealed road
 - 2. Narrowing and WSUD swales
 - 3. Threshold treatment
 - 4. 1.5m wide concrete footpath
 - 5. Potential WSUD swale

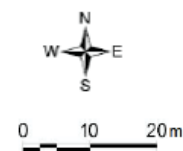


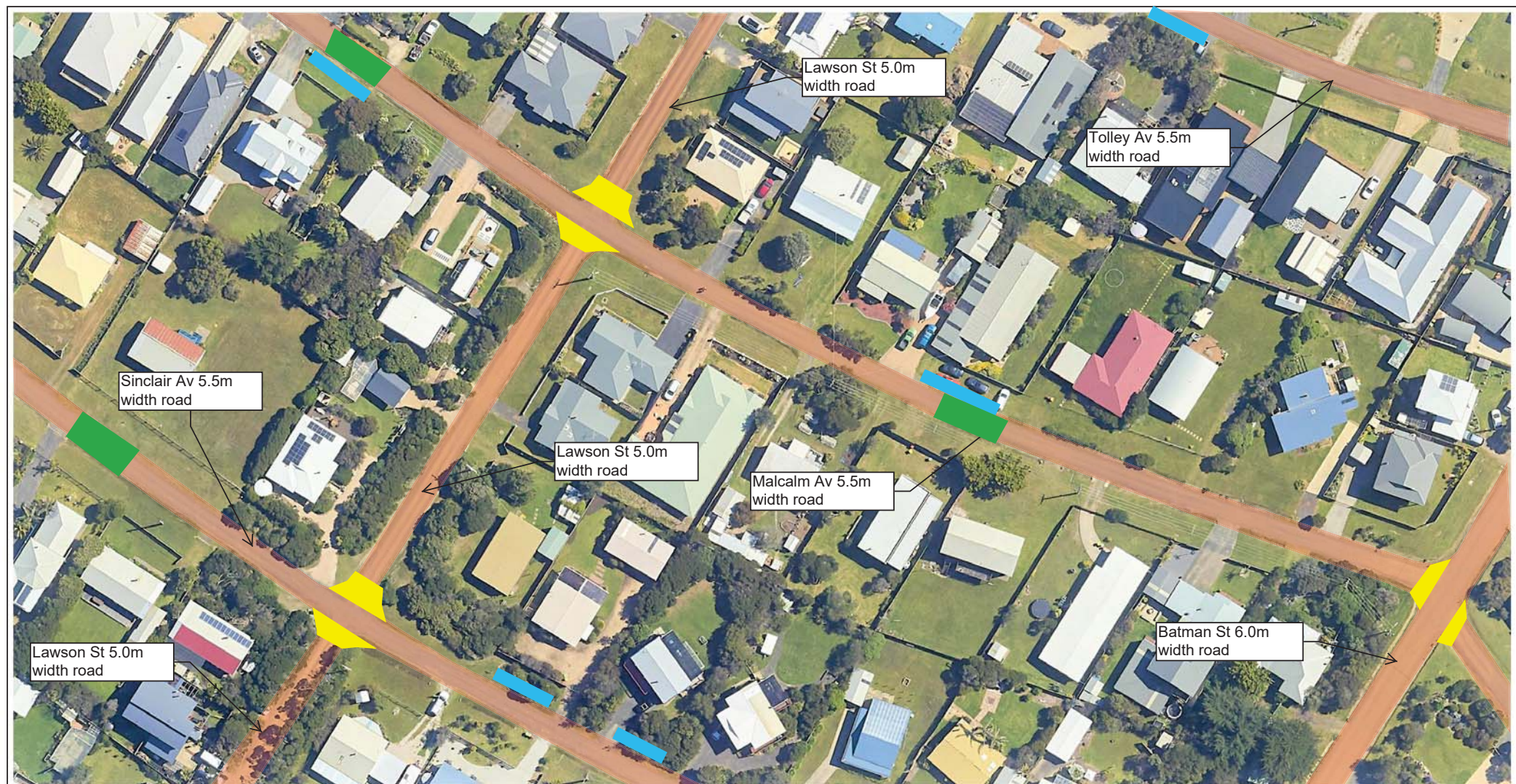




SURF BEACH AND SUNDERLAND BAY ESTATES
ROAD AND DRAINAGE IMPROVEMENT PROJECT
CONCEPT PLANS
SHEET 12 OF 35
REV 0 - 9/2/2023

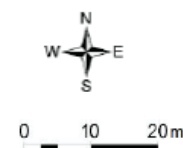
- Legend
- 1. Sealed road
 - 2. Narrowing and WSUD swales
 - 3. Threshold treatment
 - 4. 1.5m wide concrete footpath
 - 5. Potential WSUD swale

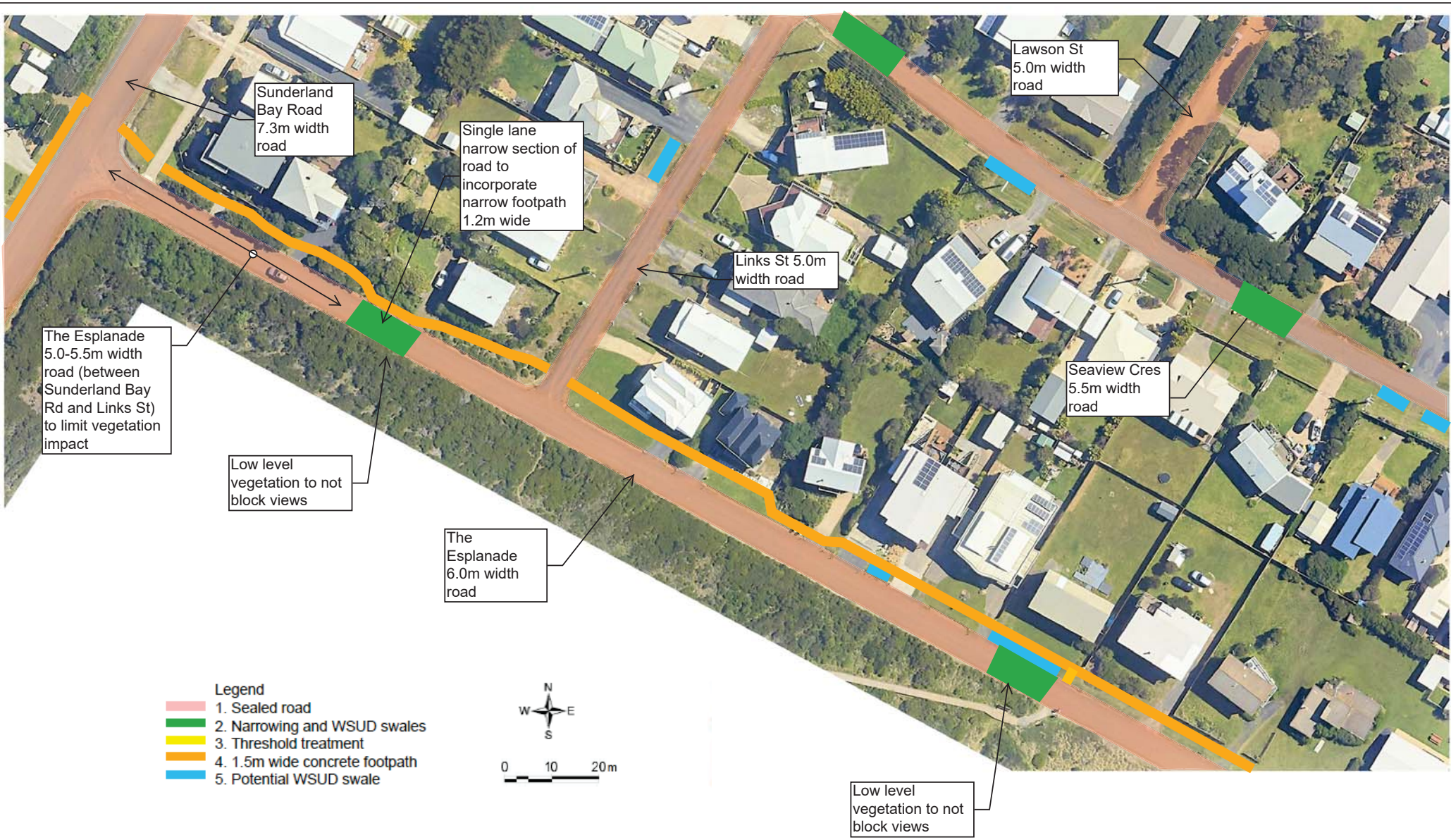


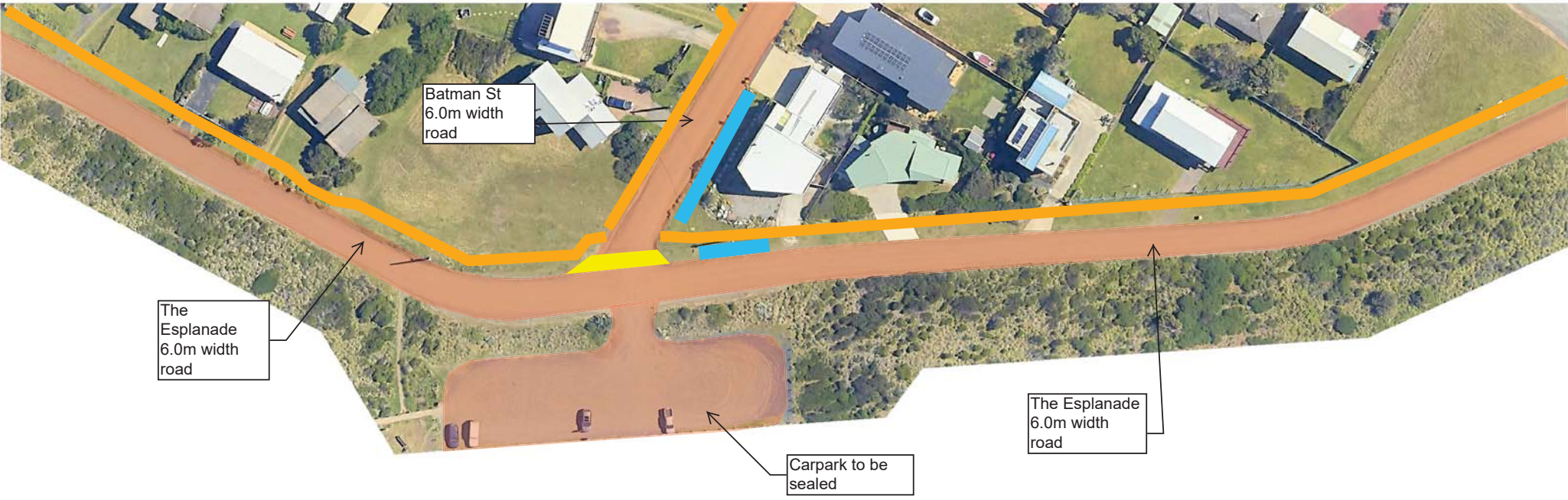


SURF BEACH AND SUNDERLAND BAY ESTATES
ROAD AND DRAINAGE IMPROVEMENT PROJECT
CONCEPT PLANS
SHEET 13 OF 35
REV 0 - 9/2/2023

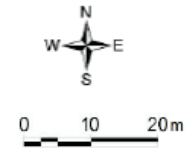
- Legend
- 1. Sealed road
 - 2. Narrowing and WSUD swales
 - 3. Threshold treatment
 - 4. 1.5m wide concrete footpath
 - 5. Potential WSUD swale

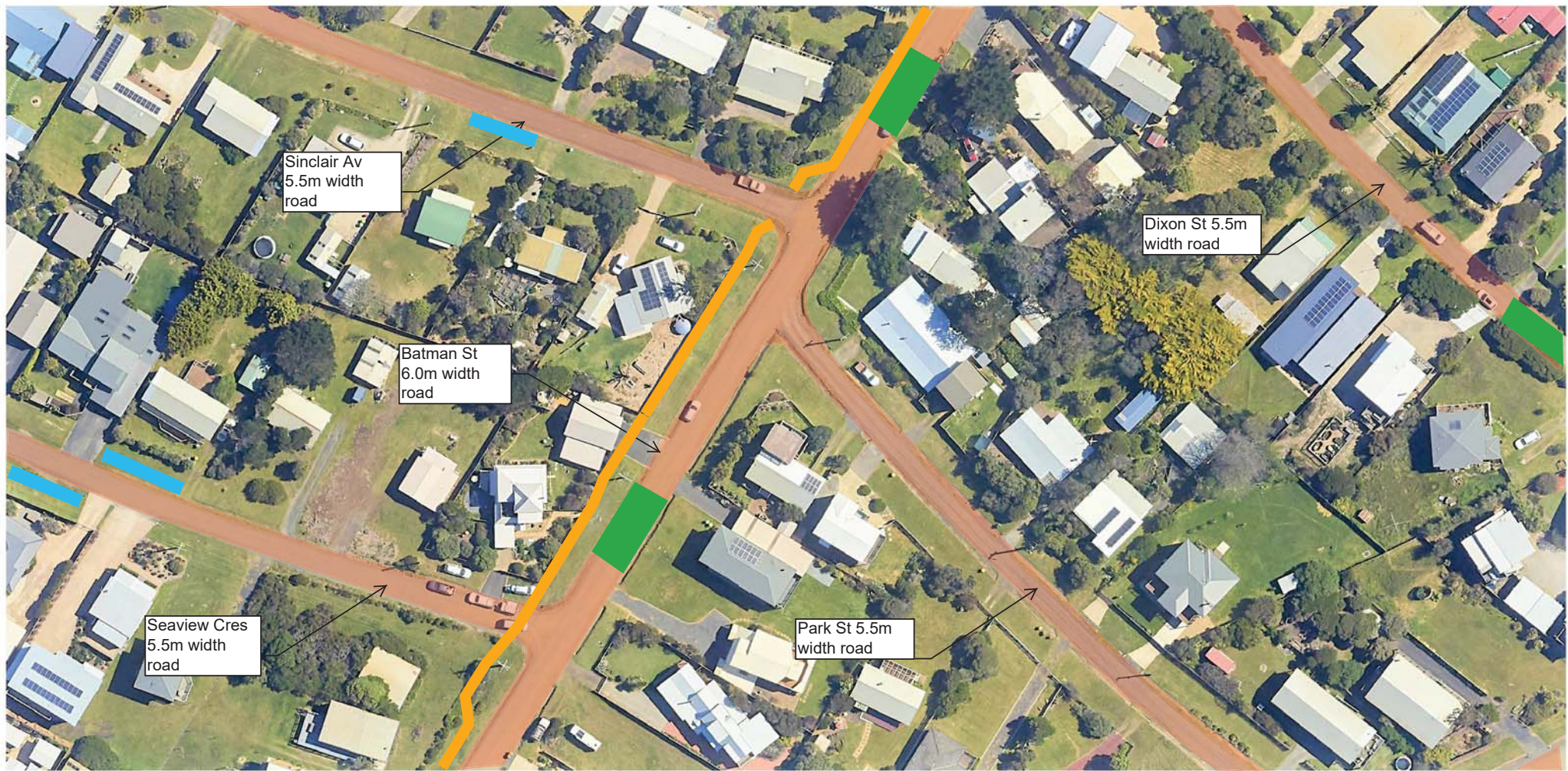






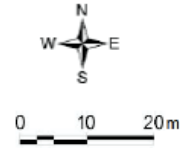
- Legend
- 1. Sealed road
 - 2. Narrowing and WSUD swales
 - 3. Threshold treatment
 - 4. 1.5m wide concrete footpath
 - 5. Potential WSUD swale





SURF BEACH AND SUNDERLAND BAY ESTATES
ROAD AND DRAINAGE IMPROVEMENT PROJECT
CONCEPT PLANS
SHEET 16 OF 35
REV 0 - 9/2/2023

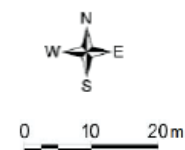
- Legend
- 1. Sealed road
 - 2. Narrowing and WSUD swales
 - 3. Threshold treatment
 - 4. 1.5m wide concrete footpath
 - 5. Potential WSUD swale





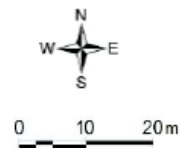
SURF BEACH AND SUNDERLAND BAY ESTATES
ROAD AND DRAINAGE IMPROVEMENT PROJECT
CONCEPT PLANS
SHEET 17 OF 35
REV 0 - 9/2/2023

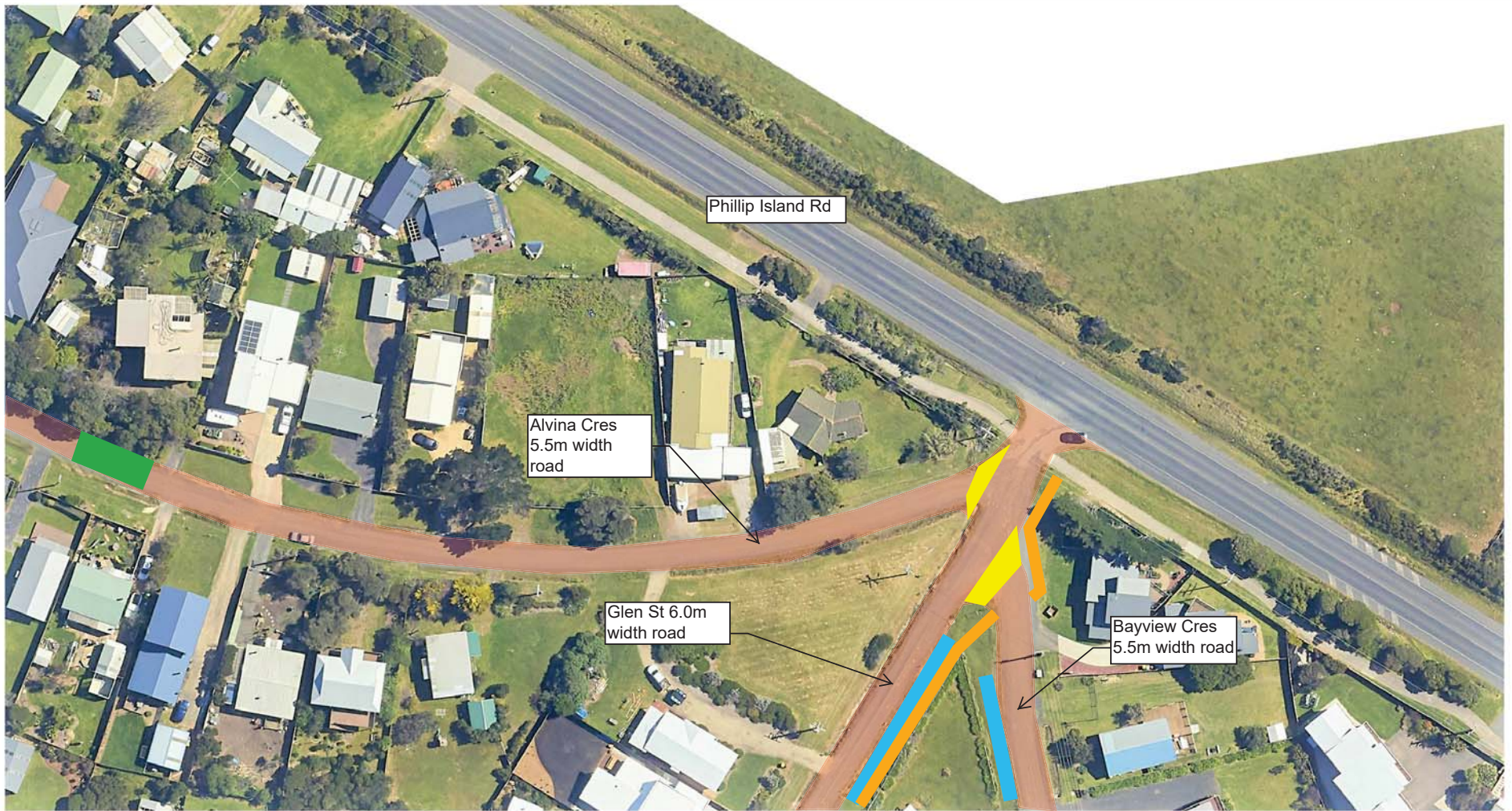
- Legend
- 1. Sealed road
 - 2. Narrowing and WSUD swales
 - 3. Threshold treatment
 - 4. 1.5m wide concrete footpath
 - 5. Potential WSUD swale



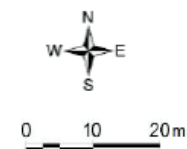


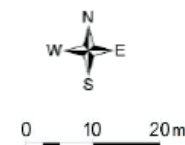
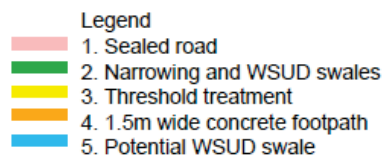
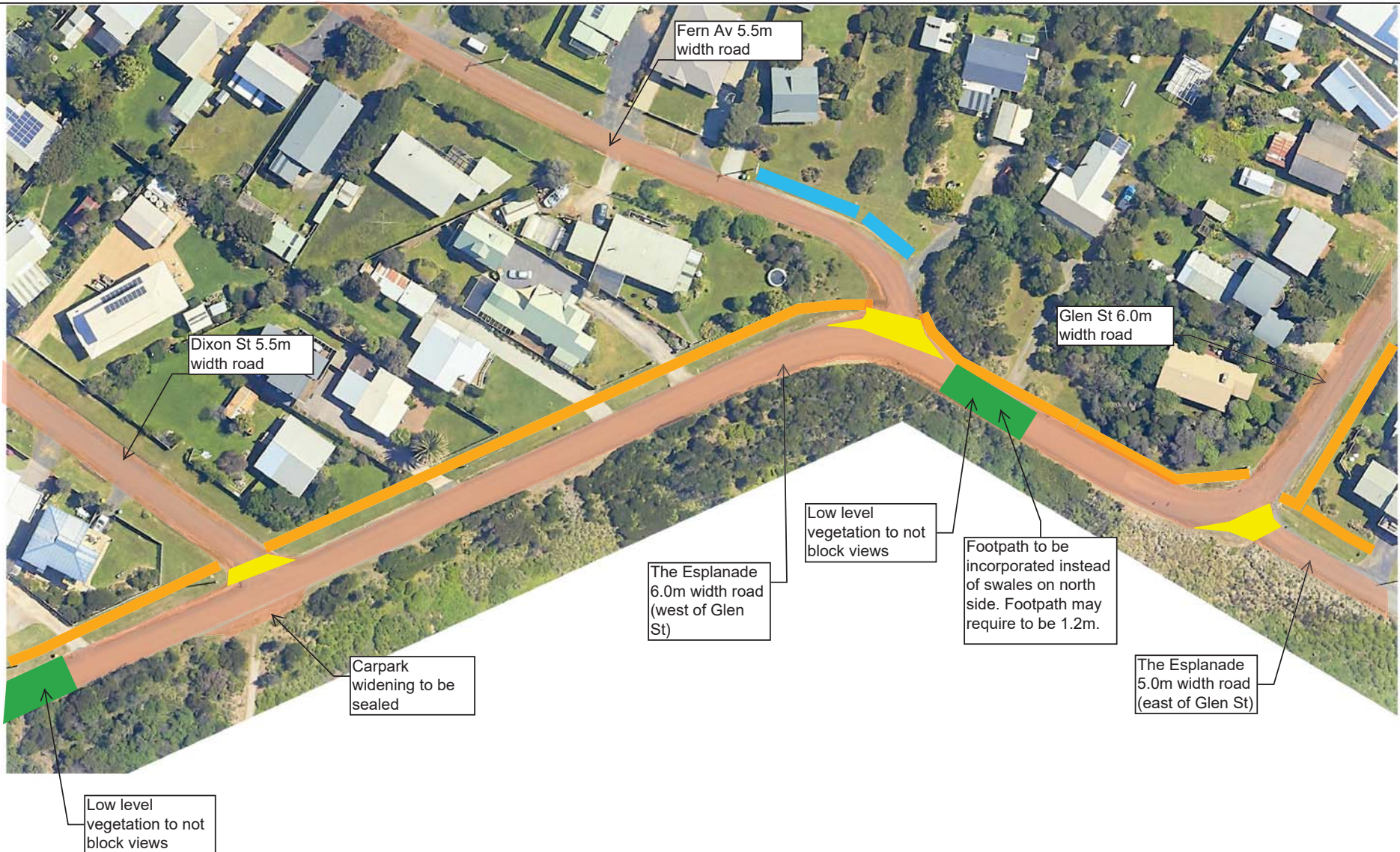
- Legend
- 1. Sealed road
 - 2. Narrowing and WSUD swales
 - 3. Threshold treatment
 - 4. 1.5m wide concrete footpath
 - 5. Potential WSUD swale





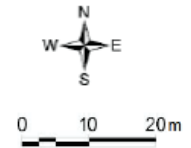
- Legend
- 1. Sealed road
 - 2. Narrowing and WSUD swales
 - 3. Threshold treatment
 - 4. 1.5m wide concrete footpath
 - 5. Potential WSUD swale

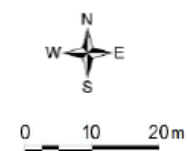
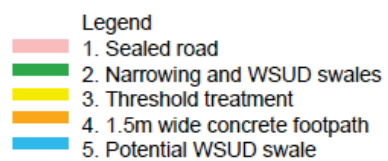
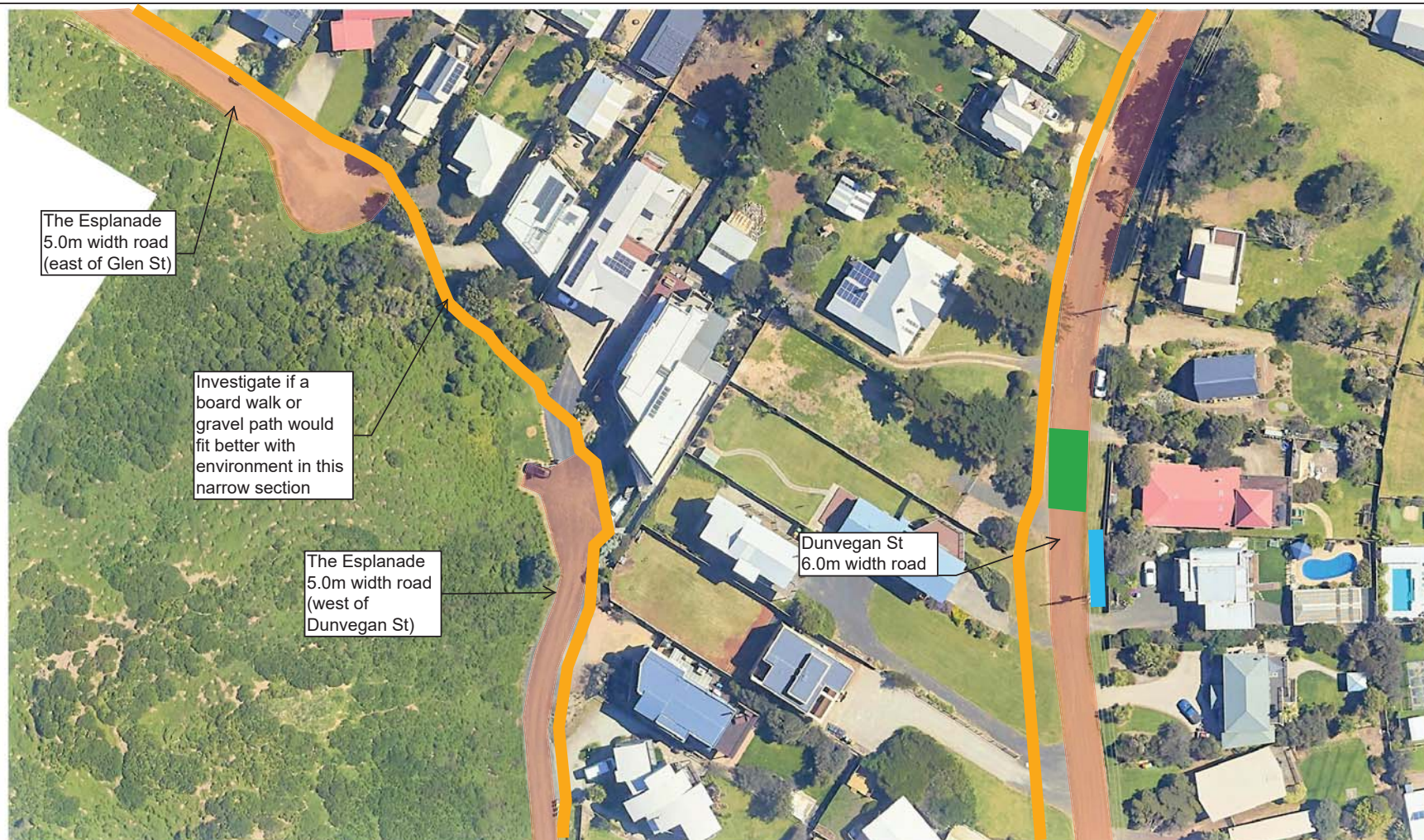


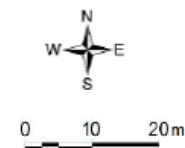
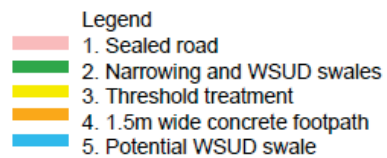
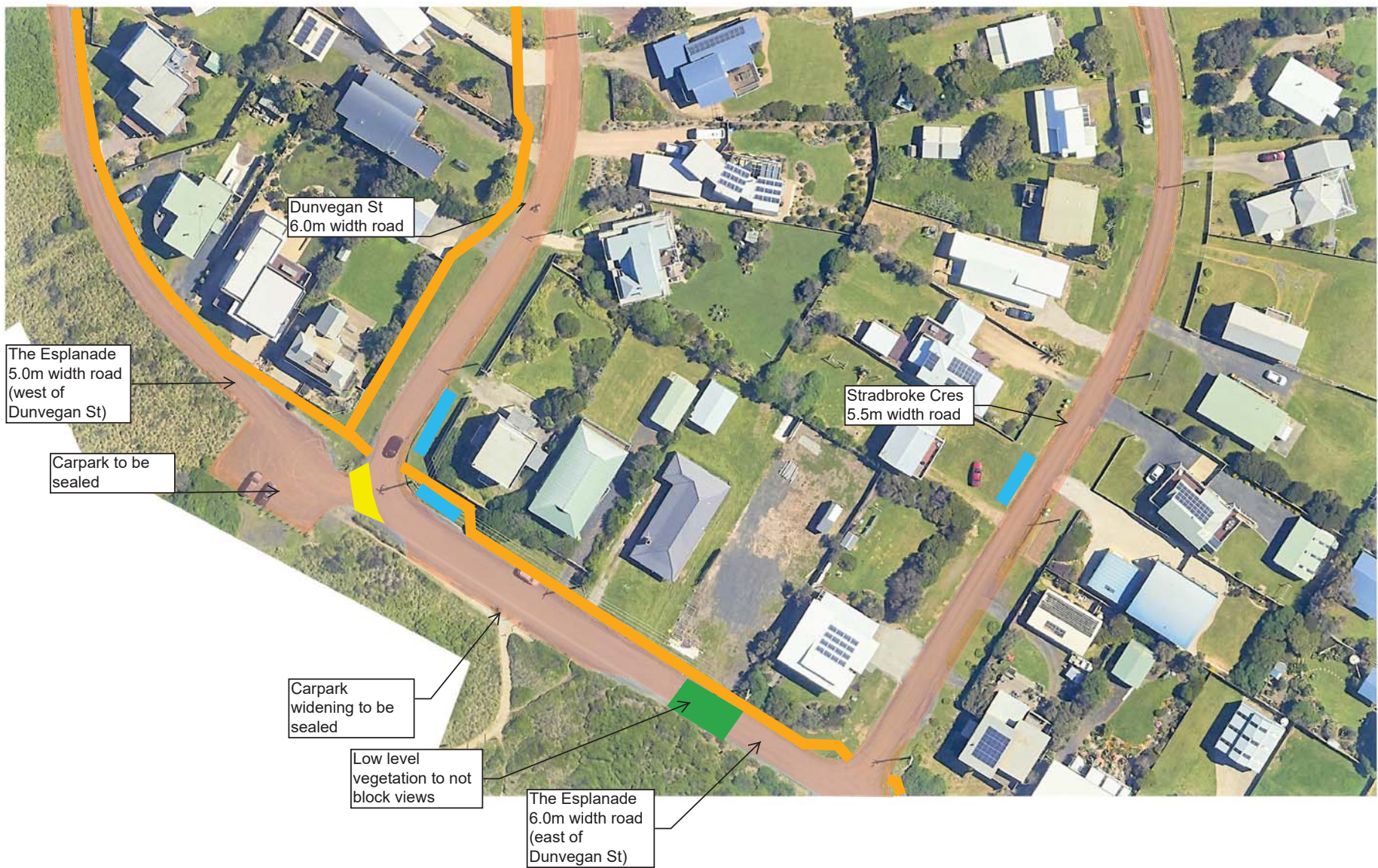


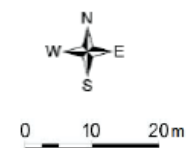
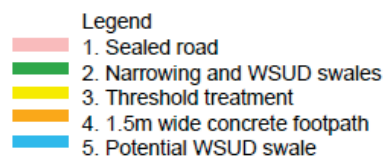
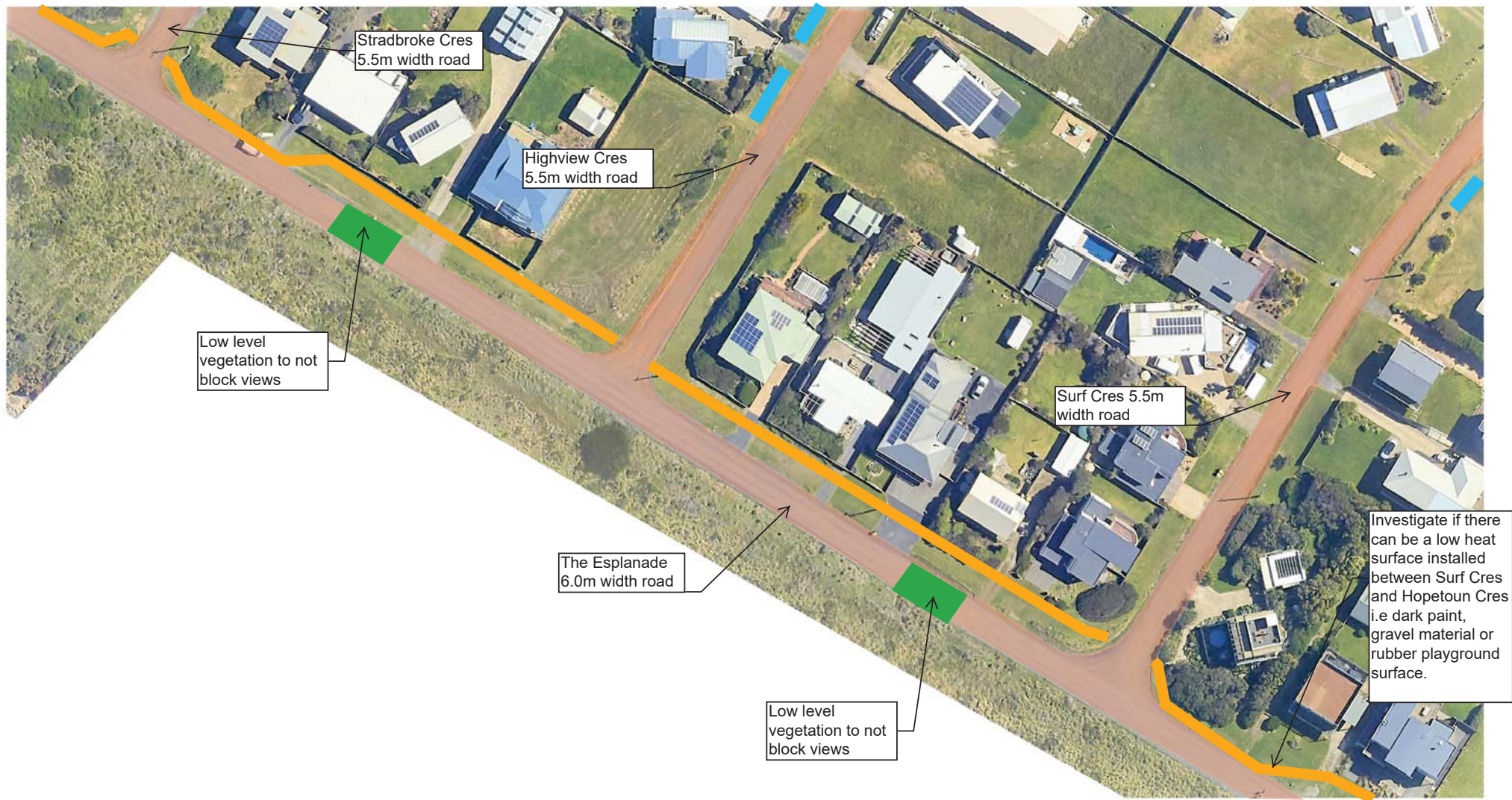


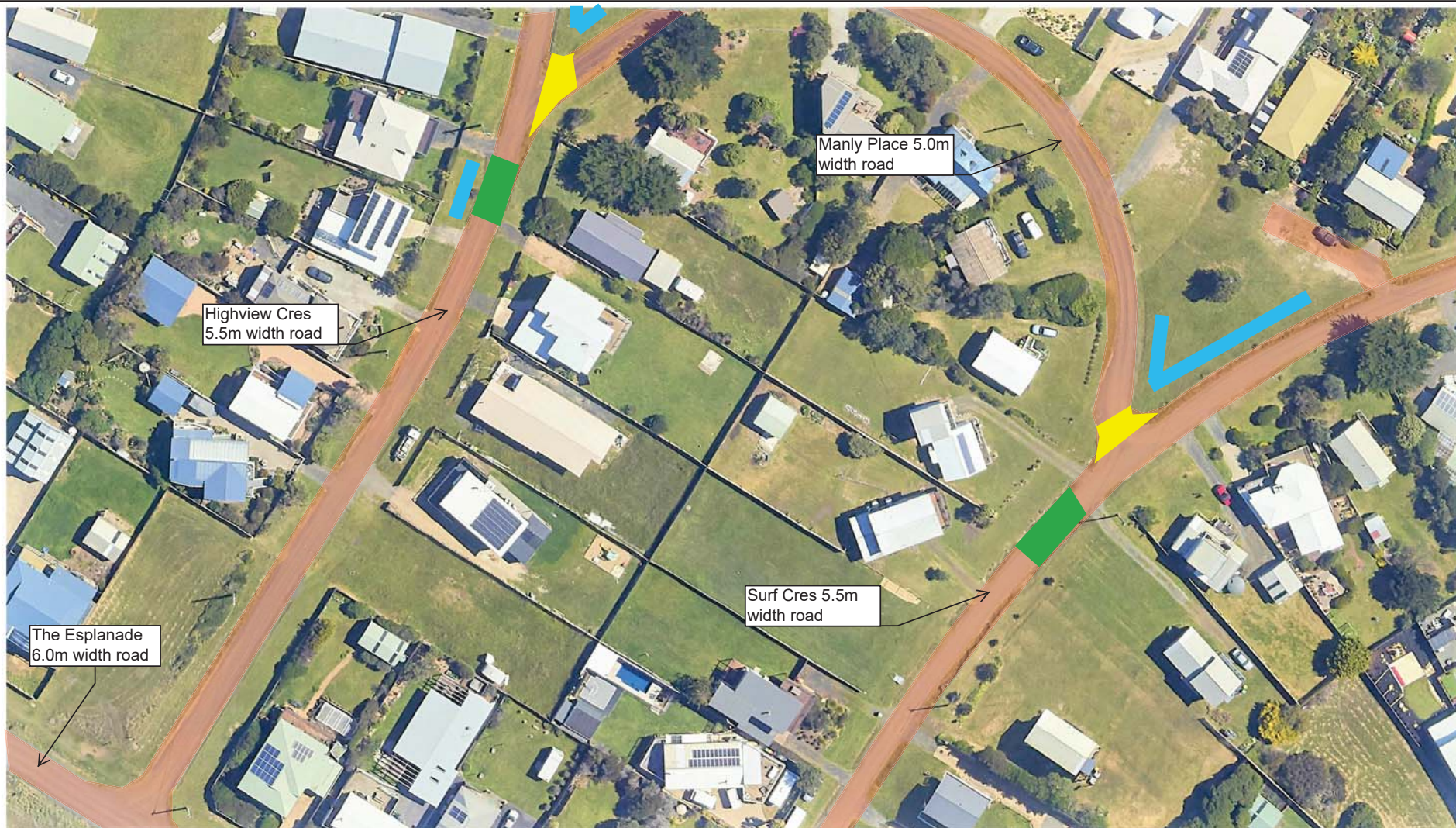
- Legend
- 1. Sealed road
 - 2. Narrowing and WSUD swales
 - 3. Threshold treatment
 - 4. 1.5m wide concrete footpath
 - 5. Potential WSUD swale













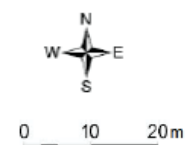
Phillip Island Rd

Stradbroke Cres
5.5m width road

Highview Cres
5.5m width road

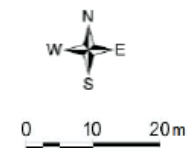
Manly Place 5.0m
width road

- Legend
- 1. Sealed road
 - 2. Narrowing and WSUD swales
 - 3. Threshold treatment
 - 4. 1.5m wide concrete footpath
 - 5. Potential WSUD swale





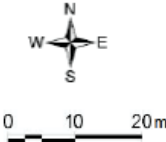
- Legend
- 1. Sealed road
 - 2. Narrowing and WSUD swales
 - 3. Threshold treatment
 - 4. 1.5m wide concrete footpath
 - 5. Potential WSUD swale





Legend

- 1. Sealed road
- 2. Narrowing and WSUD swales
- 3. Threshold treatment
- 4. 1.5m wide concrete footpath
- 5. Potential WSUD swale





Phillip Island Rd

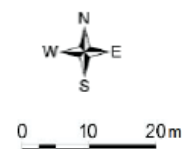
Manly Place 5.0m
width road

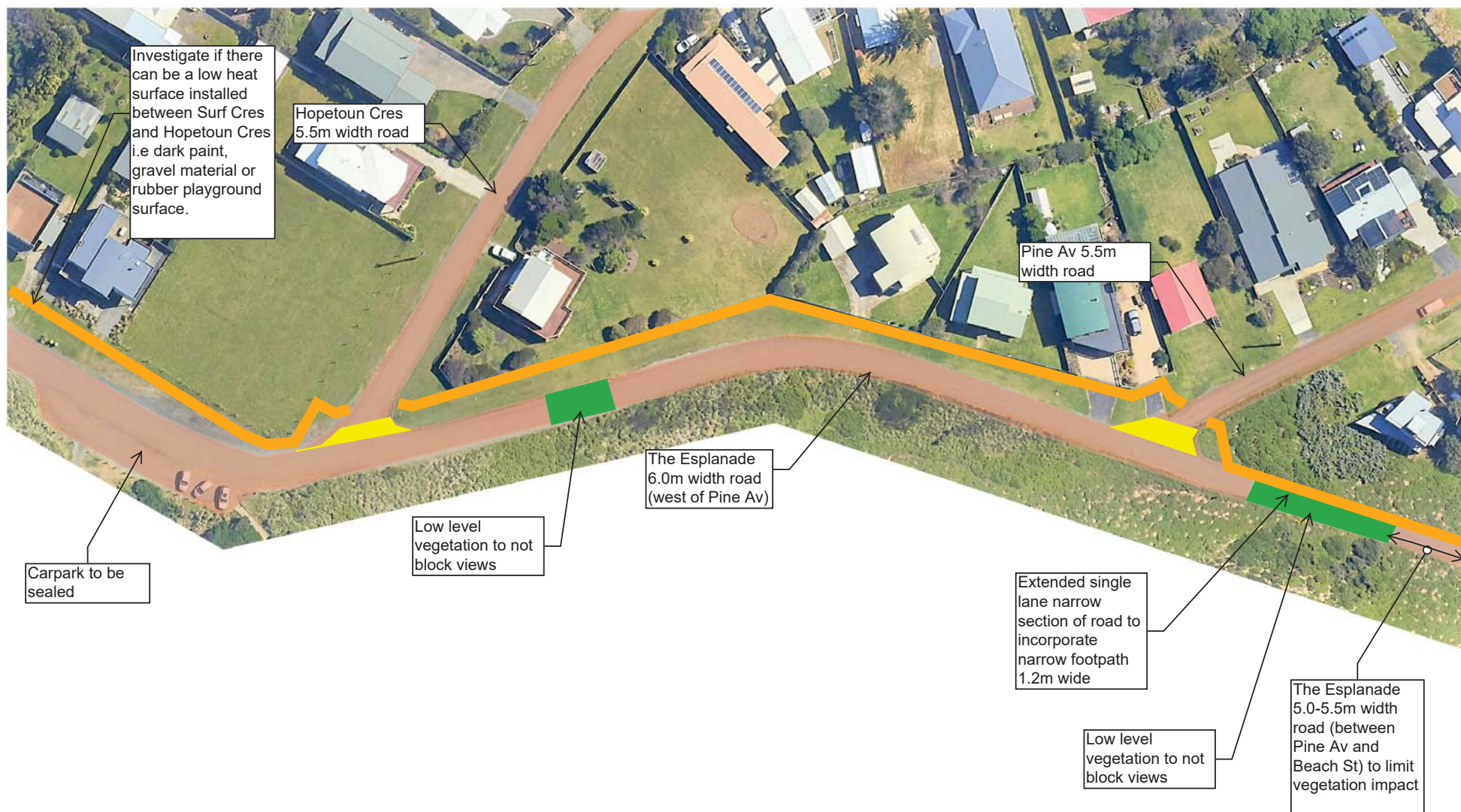
Surf Cres 5.5m
width road

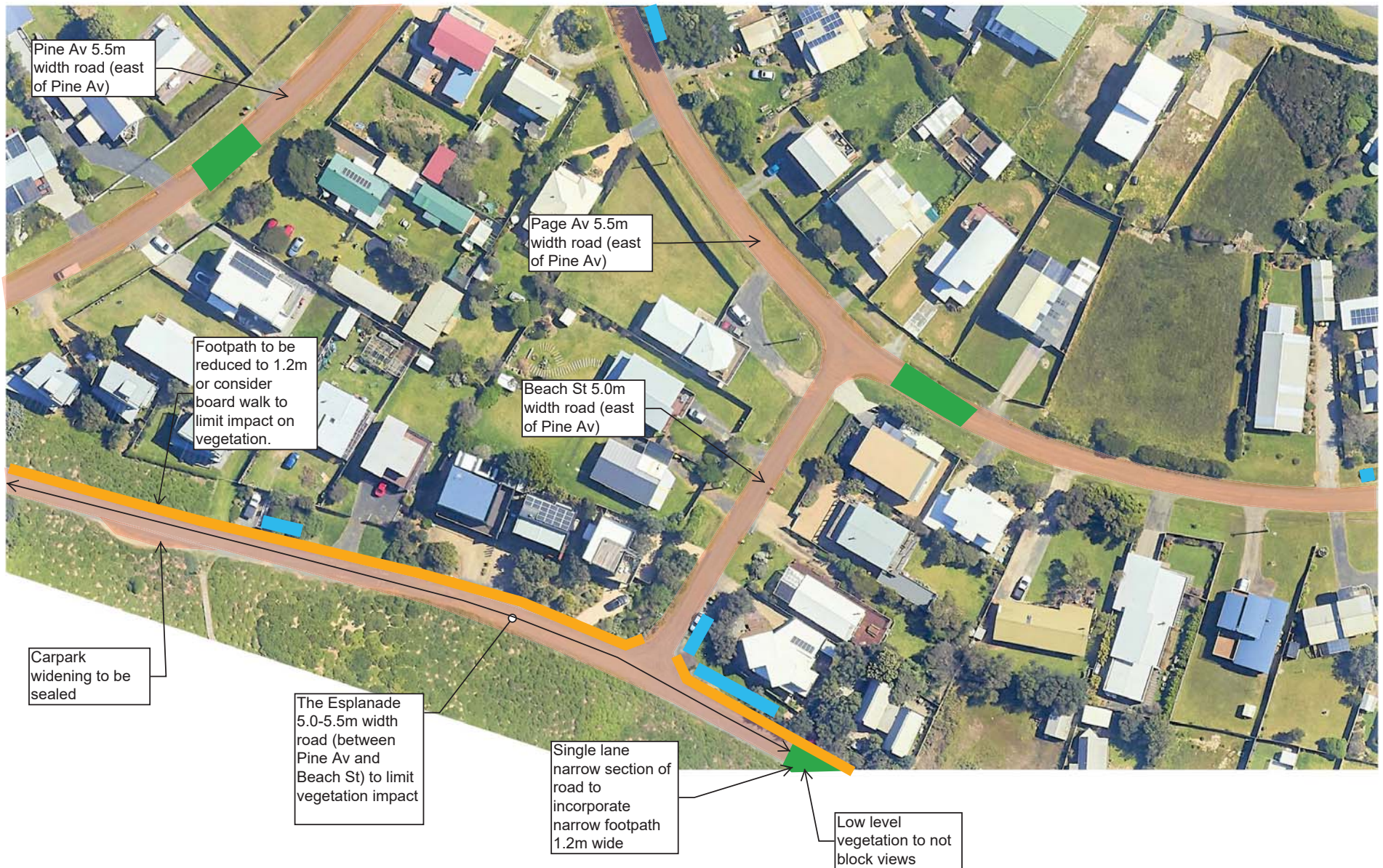
Hopetoun Cres
5.5m width road

SURF BEACH AND SUNDERLAND BAY ESTATES
ROAD AND DRAINAGE IMPROVEMENT PROJECT
CONCEPT PLANS
SHEET 29 OF 35
REV 0 - 9/2/2023

- Legend
- 1. Sealed road
 - 2. Narrowing and WSUD swales
 - 3. Threshold treatment
 - 4. 1.5m wide concrete footpath
 - 5. Potential WSUD swale

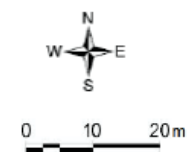






**SURF BEACH AND SUNDERLAND BAY ESTATES
ROAD AND DRAINAGE IMPROVEMENT PROJECT
CONCEPT PLANS
SHEET 31 OF 35
REV 0 - 9/2/2023**

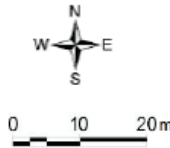
- Legend**
- 1. Sealed road
 - 2. Narrowing and WSUD swales
 - 3. Threshold treatment
 - 4. 1.5m wide concrete footpath
 - 5. Potential WSUD swale

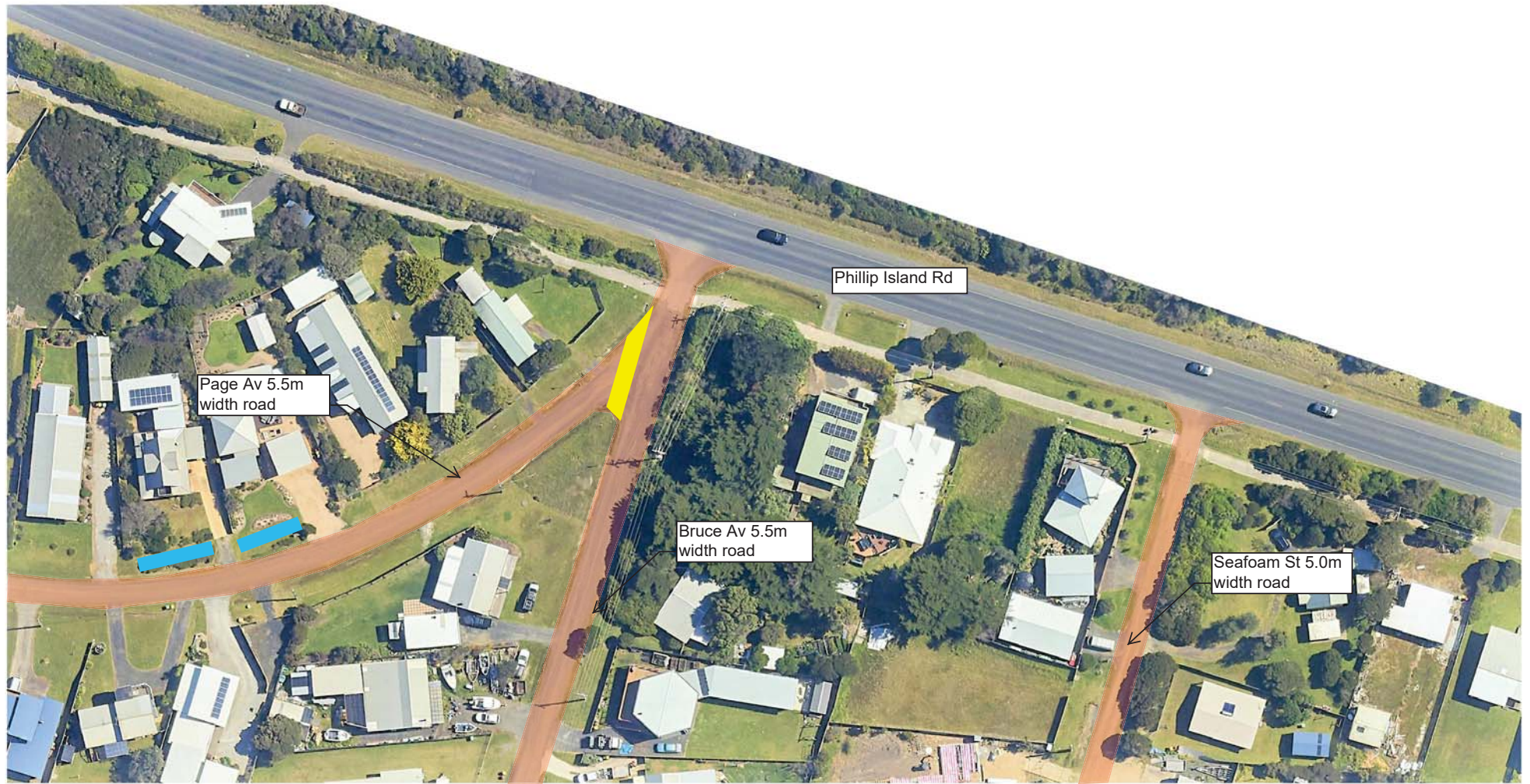




SURF BEACH AND SUNDERLAND BAY ESTATES
 ROAD AND DRAINAGE IMPROVEMENT PROJECT
 CONCEPT PLANS
 SHEET 32 OF 35
 REV 0 - 9/2/2023

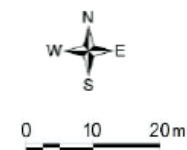
- Legend
- 1. Sealed road
 - 2. Narrowing and WSUD swales
 - 3. Threshold treatment
 - 4. 1.5m wide concrete footpath
 - 5. Potential WSUD swale

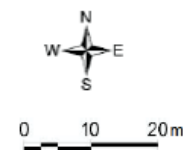
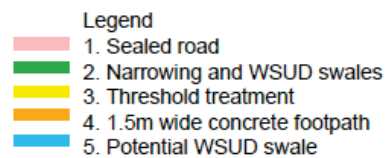
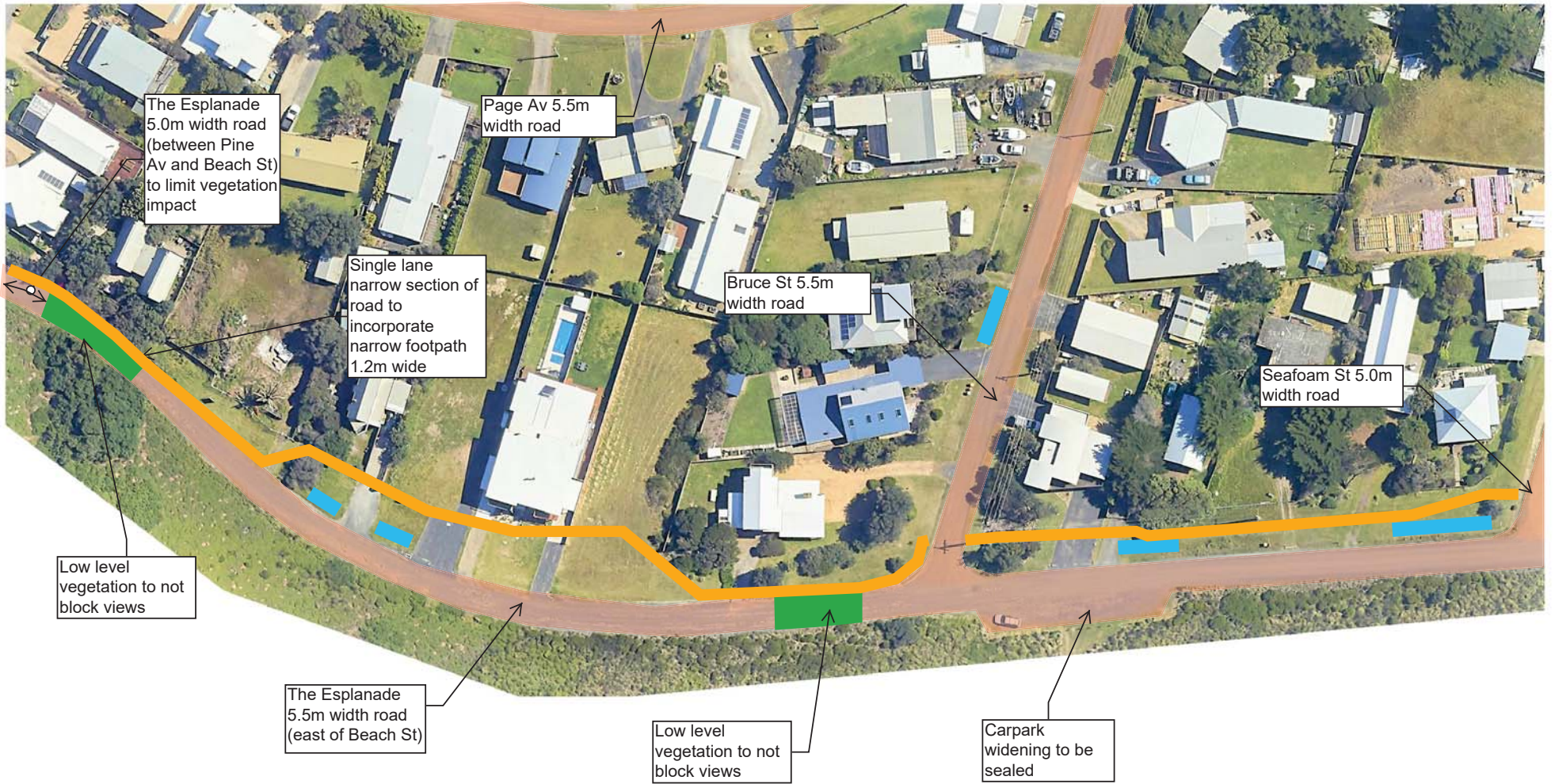




SURF BEACH AND SUNDERLAND BAY ESTATES
ROAD AND DRAINAGE IMPROVEMENT PROJECT
CONCEPT PLANS
SHEET 33 OF 35
REV 0 - 9/2/2023

- Legend
- 1. Sealed road
 - 2. Narrowing and WSUD swales
 - 3. Threshold treatment
 - 4. 1.5m wide concrete footpath
 - 5. Potential WSUD swale







SURF BEACH AND SUNDERLAND BAY ESTATES
ROAD AND DRAINAGE IMPROVEMENT PROJECT
CONCEPT PLANS
SHEET 35 OF 35
REV 0 - 9/2/2023

- Legend
- 1. Sealed road
 - 2. Narrowing and WSUD swales
 - 3. Threshold treatment
 - 4. 1.5m wide concrete footpath
 - 5. Potential WSUD swale

